



NDIA System Engineering Conference 29 October 2013

**Mr. Terry Edwards
Executive Director
System of Systems Engineering & Integration Directorate (SSE&I)
Army ASA(ALT)**

DESIGN / DEVELOP / DELIVER / DOMINATE

SOLDIERS AS THE DECISIVE EDGE

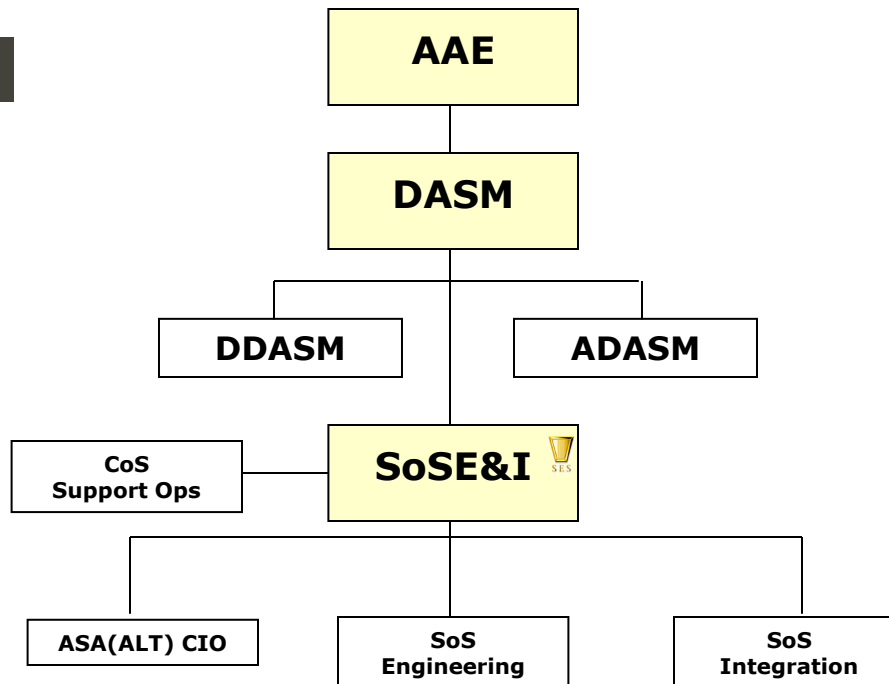


System of Systems Engineering & Integration (SoSE&I)



Vision

To be the focal point for System of Systems Engineering and Integration across the Army's materiel development community



Mission Statement

Provide coordinated system of systems analysis, engineering, architectural and integration products to facilitate how the Army efficiently shapes, manages, validates and synchronizes the fielding of integrated materiel capabilities

Goals

- ***Develop Army SoS Integrated Architectures to deliver current and future Capability Sets.***
- ***Provide SoS engineering expertise to support current Army decisions.***
- ***Support Program Objective Memorandum (POM) process to implement SoS architecture decisions and fund integrated capability sets.***
- ***Ensure acquisition programs comply with SoS architecture through integrated testing.***
- ***Lead the ASAALT implementation of the Agile Process.***
- ***Lead technology integration efforts for the Army.***
- ***Ensure the coordinated fielding of integrated capability sets.***

USE OR DISCLOSURE OF DATA CONTAINED ON THIS PAGE IS SUBJECT TO RESTRICTIONS ON TITLE PAGE.





SoSE&I Key Activities



1. Army SoS and Systems Engineering Standards

- a. Common Operating Environment (COE)
- b. Vehicular Integration for C4ISR/EW Interoperability (VICTORY)
- c. Future Airborne Capability Environment (FACE)
- d. Advanced Systems Engineering Capability (ASEC)

2. SoS Engineering Management Plan (SOSEMP)

- a. Engineering and Architecture Artifacts
- b. Capability and Gap Analysis, 'Good Enough' POM drills

3. Program Engineering Support

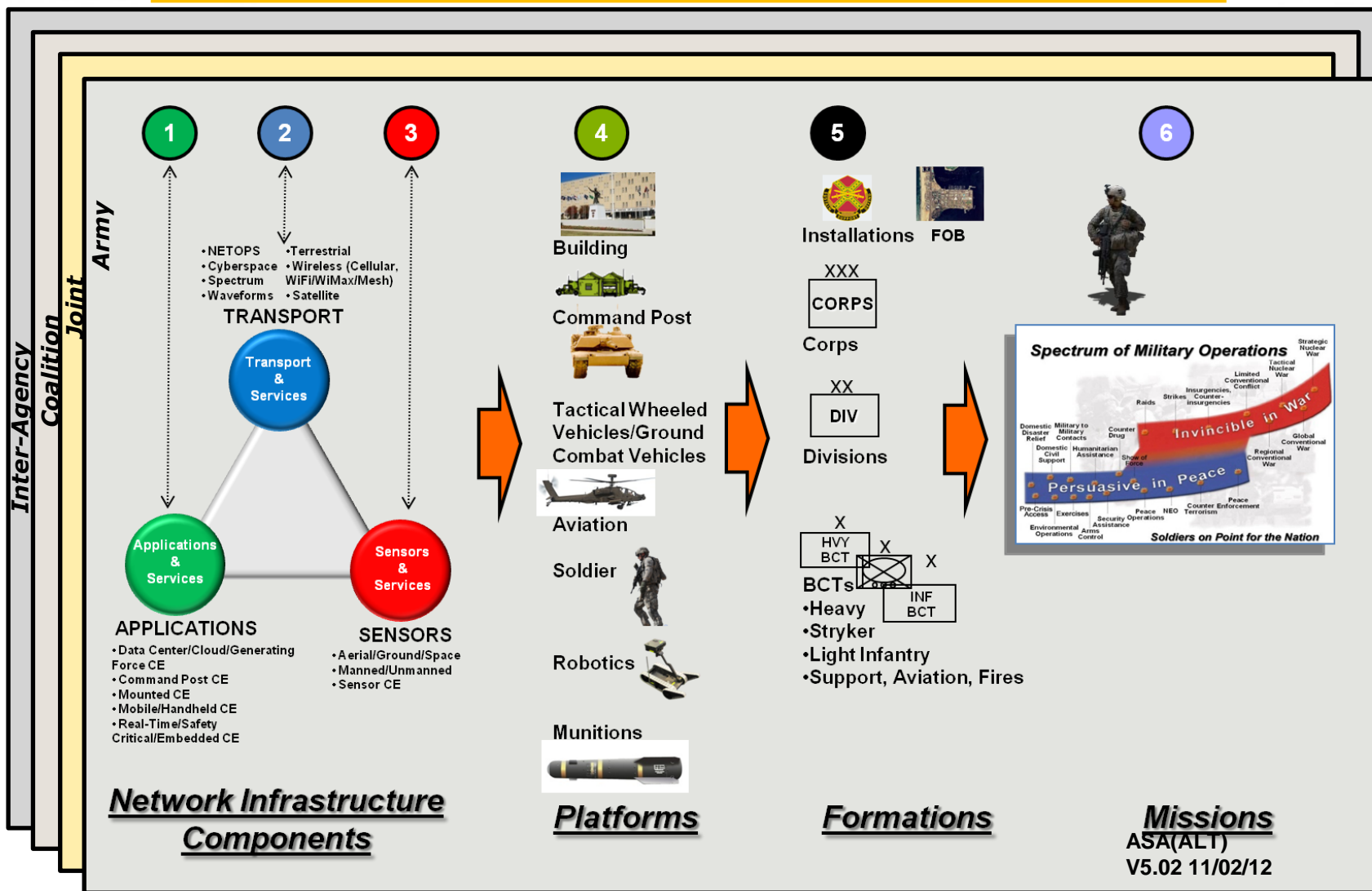
- a. Army Systems Engineering Forum (ASEF)
 - System Engineering Best Practices and Common Processes
 - OSD and Army policy discussions
- b. Program Documentation (SEP, PPP, TEMP, Life Cycle Sustainment Plan)
- c. Workforce Development
- d. Persistent M&S and Emulation Environment "Always ON"

4. Network Evaluation Environment (NIE)

5. Capability Set Fielding Synchronization



Systems Capability Development Reference Framework

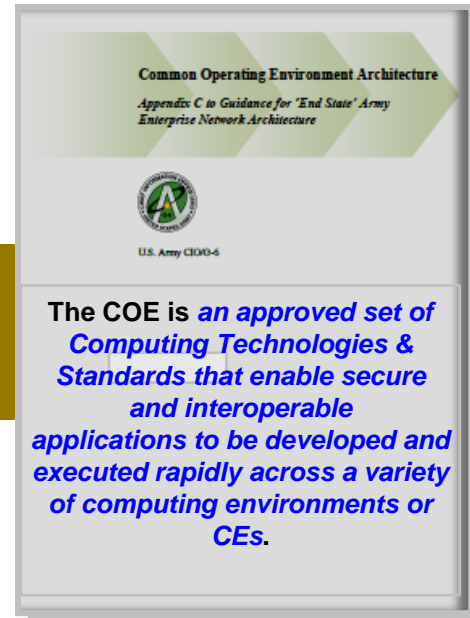
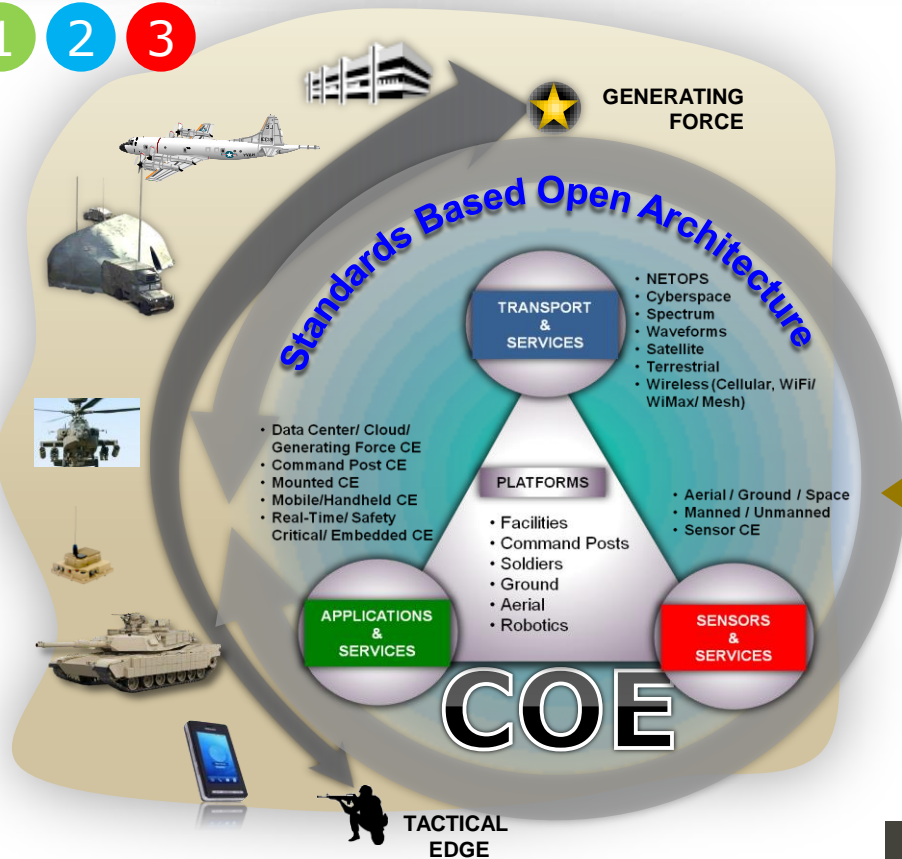




Shaping the Army's COE



1 2 3



CE LEADS:

- Mobile/Handheld CE-**PEO Soldier**
- Mounted CE - **PEO C3T**
- Command Post CE - **PEO IEW&S & C3T**
- Data Center/Cloud/Generating Force CE - **PEO EIS**
- Sensor CE - **PEO IEW&S**
- Real Time /Safety Critical/Embedded CE - **PEO Aviation**

USE OR DISCLOSURE OF DATA CONTAINED ON THIS PAGE IS SUBJECT TO RESTRICTIONS ON TITLE PAGE.

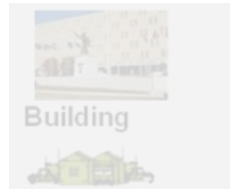




COE Framework - Platforms



4



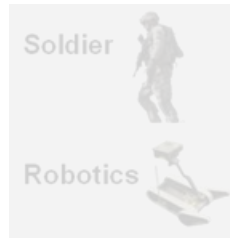
Command Post



Tactical Wheeled
Vehicles/Ground
Combat Vehicles



Aviation



Soldier

Robotics

Munitions



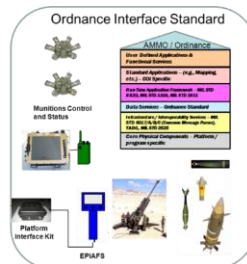
Platforms



Vehicular Integration for C4ISR/EW Interoperability (VICTORY) Objective - Define a network-based data bus architecture for integrating the electronics systems, enabling C4ISR/EW systems to share information, computational resources, and user interfaces (displays, controls, etc.) as a means of reducing overall vehicle size, weight, and power (SWaP) requirements.



Future Airborne Capability Environments (FACE) Objective - Publish a set of standards that define a Department of Defense - (DoD) wide COE for real time, safety critical embedded applications for avionics. Strategy is to create a hardware-agnostic software environment in war-fighting platforms that enables conformant applications to be deployed on multiple platforms without impact to the application.



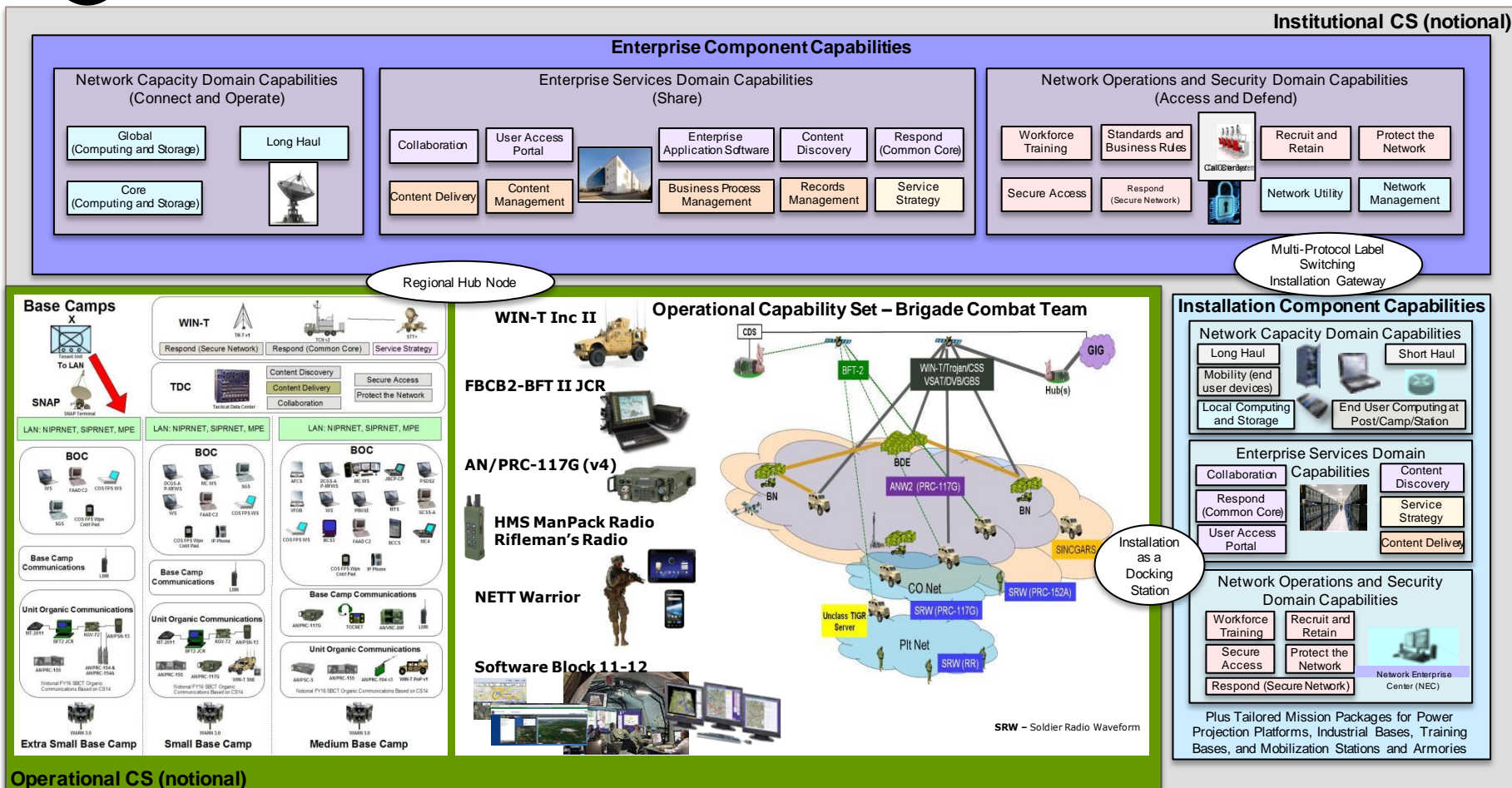
Ordnance Interface Standard (OIS) Objective - Provide standardization and definition of ordnance interfaces, quality attributes, engineering artifacts, and architecture framework to enable control of Ordnance Systems by any PoR/system that has the required ordnance certifications. Provides efficiencies in development through reusable artifacts for existing systems.





Network Capability Set

5



Aim: One unified, modernized Army network that improves effectiveness, security and efficiency

USE OR DISCLOSURE OF DATA CONTAINED ON THIS PAGE IS SUBJECT TO RESTRICTIONS ON TITLE PAGE.

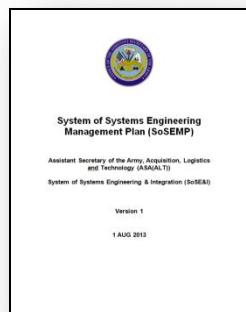


DESIGN / DEVELOP / DELIVER / DOMINATE
SOLDIERS AS THE DECISIVE EDGE

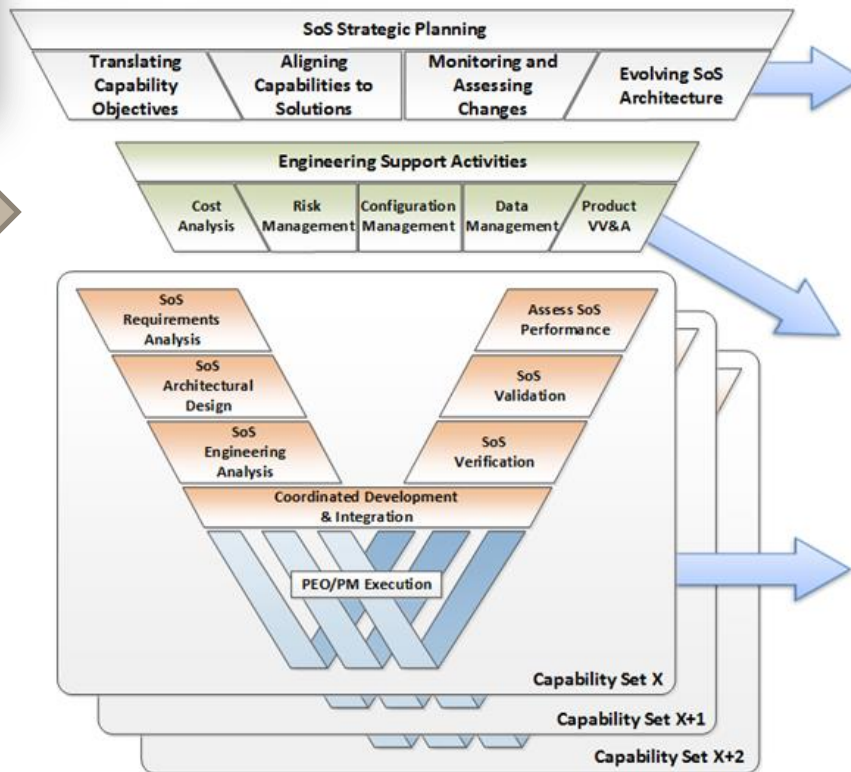


SoS Engineering Process

SoS Management Plan SoS(EMP)



The SoSEMP serves as the guiding document for Army System of Systems (SoS) engineering, acquisition planning, portfolio management, and decision making



Strategic Planning Guidance to shape SoS Architectures

Engineering Support activities applied to achieve strategic and technical goals using common SE processes, data, and analysis

SoS Engineering processes undertaken with PEO operations to ensure SoS capabilities are developed, integrated and tested while maintaining alignment with Program Cost, Schedule and Performance strategies

Provides the SoS Engineering component of the overall Army Enterprise development effort

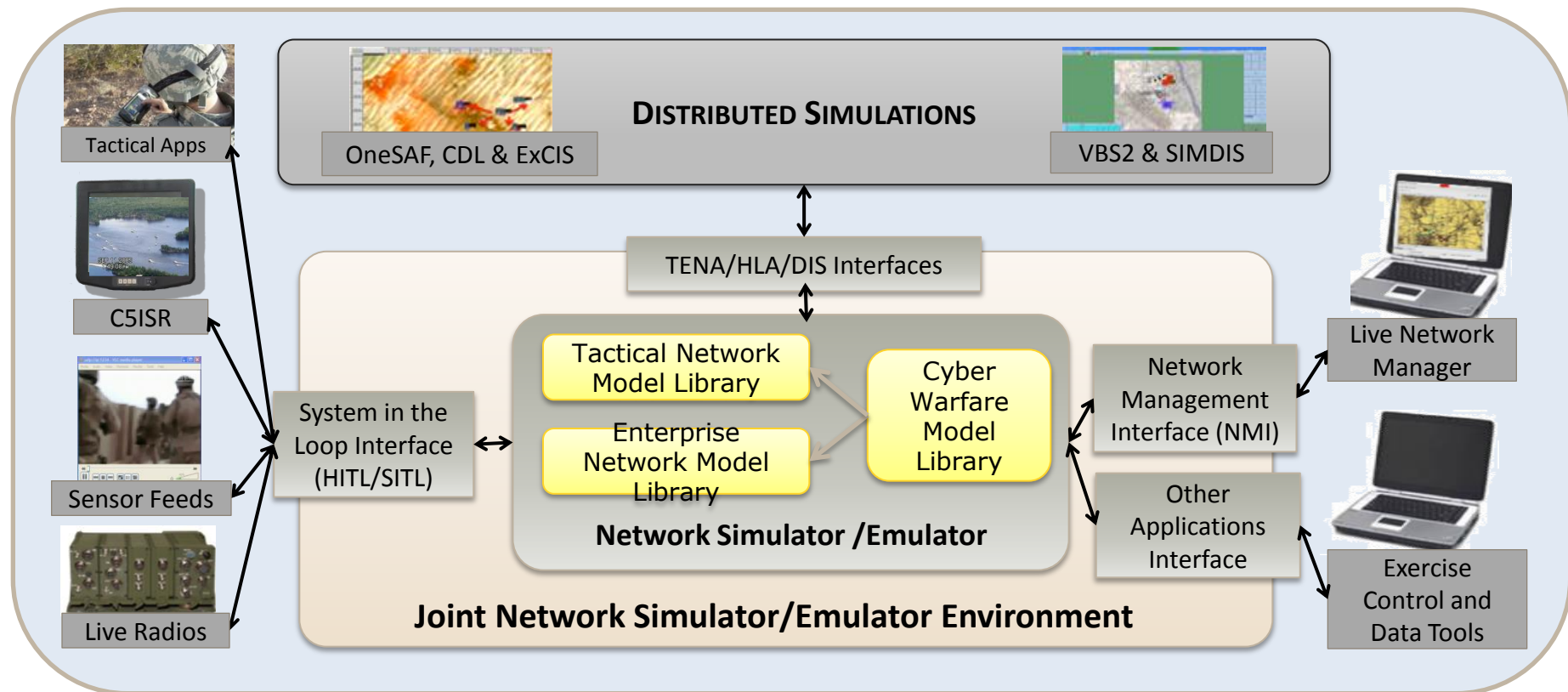
USE OR DISCLOSURE OF DATA CONTAINED ON THIS PAGE IS SUBJECT TO RESTRICTIONS ON TITLE PAGE.





"ON DEMAND"

Live-Virtual-Constructive Architecture



Providing A Network Modernization "Integration/Test Harness" Capability Which Can Support Multiple Use Cases Across The Acquisition Life Cycle

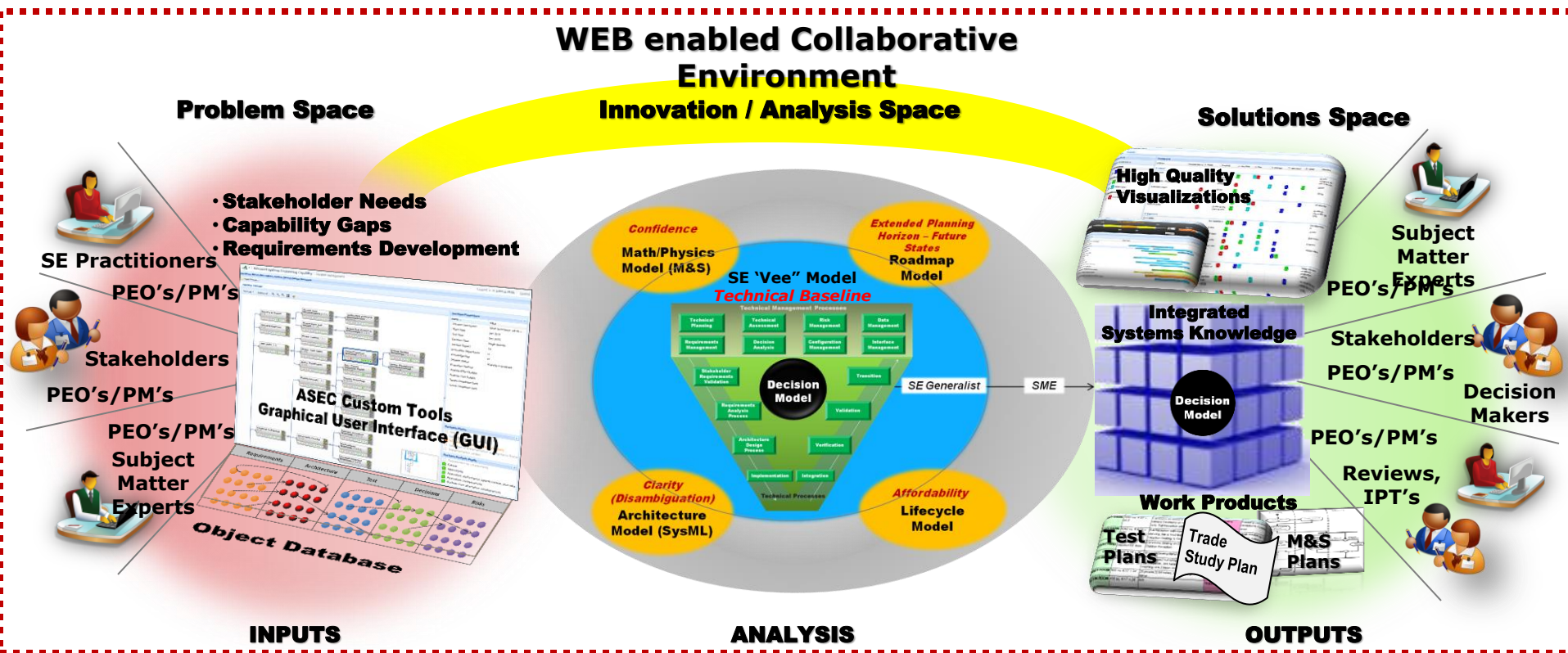
USE OR DISCLOSURE OF DATA CONTAINED ON THIS PAGE IS SUBJECT TO RESTRICTIONS ON TITLE PAGE.



DESIGN / DEVELOP / DELIVER / DOMINATE
SOLDIERS AS THE DECISIVE EDGE



Systems Engineering Data Collaboration Framework to Improve SE Effectiveness



Establishing an integrated Systems Engineering knowledge creation and capture framework built on a decision centric method, high quality data visualizations, intuitive navigation that enables continuous data traceability, real time collaboration and knowledge pattern leverage supporting the entire system lifecycle

USE OR DISCLOSURE OF DATA CONTAINED ON THIS PAGE IS SUBJECT TO RESTRICTIONS ON TITLE PAGE.



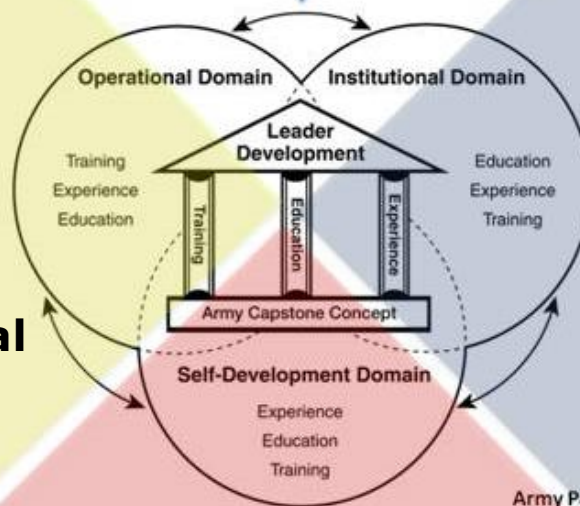


Workforce Development Model

System of Systems/ System Engineering
Workforce Development Governance Board

Operational Domain

- Mentoring
- Identify and groom future leaders
- Multiple organizational assignments



Institutional Domain

- Standardized Practices
- Promote Education (Defense Acquisition University, Civilian Education System, Naval Postgraduate School, etc.)

Army Pamphlet 350-58

Self-Development Domain

- Establish Career Paths
- Publish Competencies
- Reward Behavior



DESIGN / DEVELOP / DELIVER / DOMINATE
SOLDIERS AS THE DECISIVE EDGE





The Army's Network Integration Evaluation (NIE)



What the NIE does for the Army:

The NIE brings Soldiers, materiel developers, engineers and testers together in a realistic operational environment.

VCSA – 9 May 2012

Intended benefits for the Army

- ✓ *Eliminates network integration burdens on deployed forces*
- ✓ *Conduct DOTML-PF assessments of the network, capability sets and other capabilities*
- ✓ *Establishes and refines TTPs, SOPs and training for the baseline capability sets*
- ✓ *Infrastructure and configuration to conduct DT & OT for POR in an operational environment*
- ✓ *Serves as an environment to identify operational and technical gaps*
- ✓ *Serves as a test-bed to evaluate mature industry and Gov technologies to fill identified gaps*

Executing the NIE....

- ✓ *Part of the Army's six-phase Agile Process for Capabilities Integration*
- ✓ *Semi-annual evaluation and testing of networked and non-networked capabilities using an operational BCT in a realistic environment*
 - ✓ *Consolidating Network evaluations at Ft. Bliss/WSMR enables testing and evaluating the Army Network as a whole vice individual programs*
 - ✓ *Includes lab assessment and risk reduction at Aberdeen Proving Grounds*
- ✓ *Leverages industry innovation and RDT&E funding to close the IT "Gap"*

Set conditions for continued success by implementing Lessons Learned

USE OR DISCLOSURE OF DATA CONTAINED ON THIS PAGE IS SUBJECT TO RESTRICTIONS ON TITLE PAGE.





Direction for Future Integration Evaluations



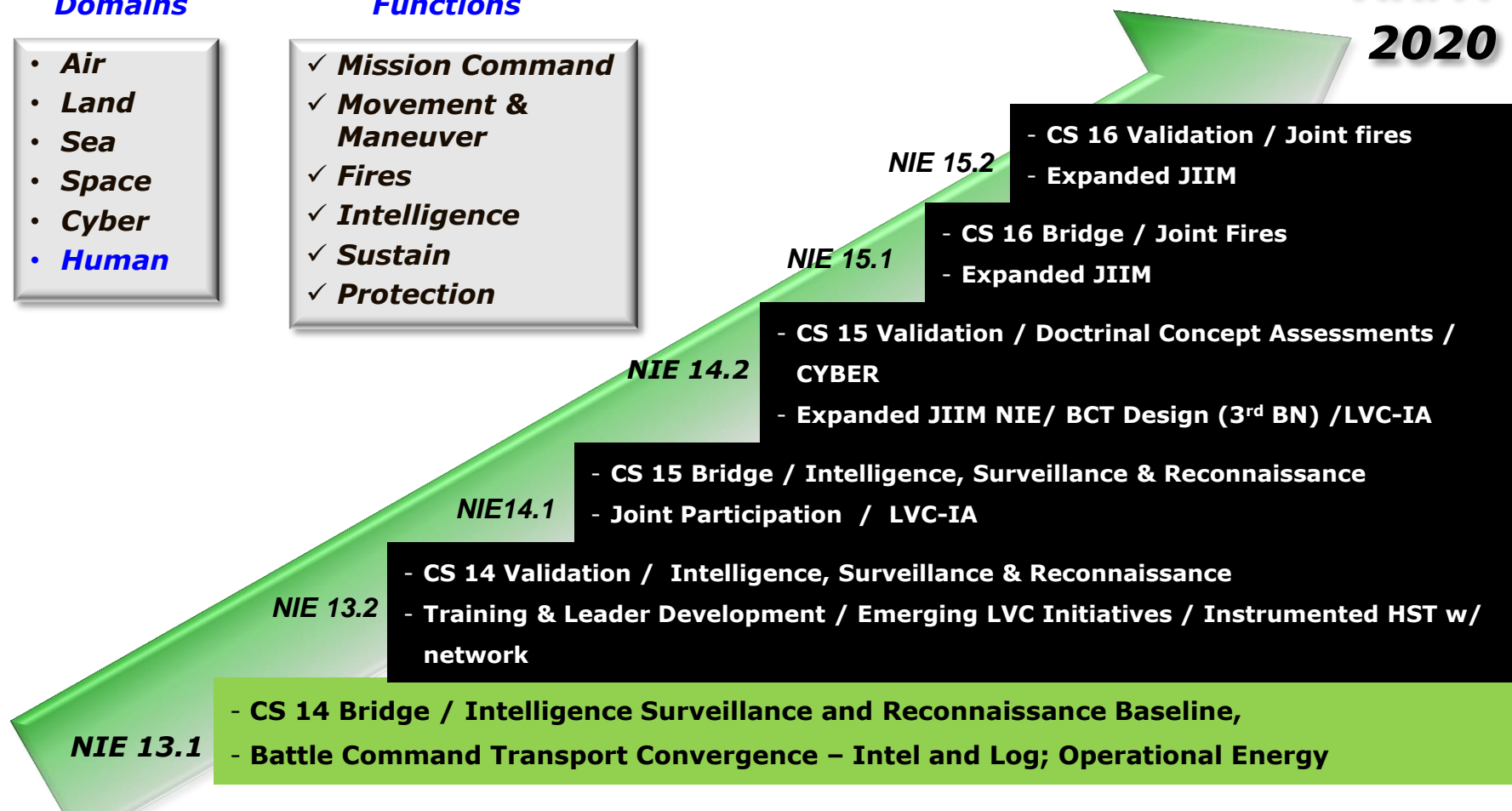
Strategic Domains

- Air
- Land
- Sea
- Space
- Cyber
- **Human**

Warfighting Functions

- ✓ Mission Command
- ✓ Movement & Maneuver
- ✓ Fires
- ✓ Intelligence
- ✓ Sustain
- ✓ Protection

**ARMY
2020**



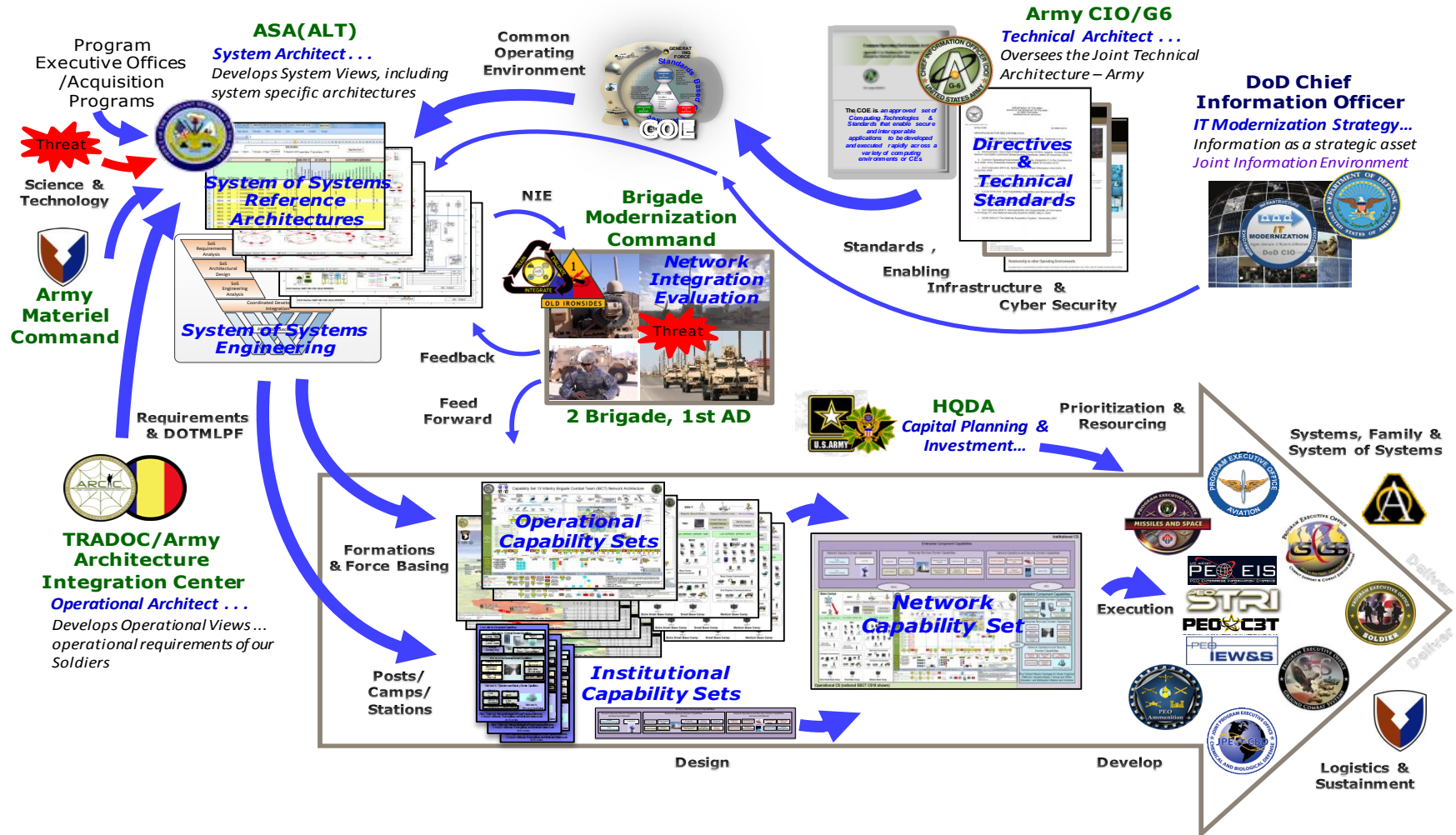
NIE is more than a field evaluation ... it is the integration, training and validation leading to DOTMLPF recommendations for the Army

USE OR DISCLOSURE OF DATA CONTAINED ON THIS PAGE IS SUBJECT TO RESTRICTIONS ON TITLE PAGE.





Network Capability Set “Building a Blueprint”



Aim: One unified, modernized Army network that improves effectiveness, security and efficiency

USE OR DISCLOSURE OF DATA CONTAINED ON THIS PAGE IS SUBJECT TO RESTRICTIONS ON TITLE PAGE





Questions



ASA(ALT) SOSE&I SharePoint Knowledge Center:
<https://sp3.kc.army.mil/sosei/kmportal/default.aspx>

USE OR DISCLOSURE OF DATA CONTAINED ON THIS PAGE IS SUBJECT TO RESTRICTIONS ON TITLE PAGE.



DESIGN / DEVELOP / DELIVER / DOMINATE
SOLDIERS AS THE DECISIVE EDGE