



SPECIAL OPERATIONS FORCES INDUSTRY CONFERENCE

Special Reconnaissance, Surveillance, and Exploitation

Major Ryan Hall

Program Manager

Mr. Glen Cullen

Deputy Program Manager

Rapid Capability Insertion



Operating Structure

PROGRAMS/ PROGRAM MANAGERS

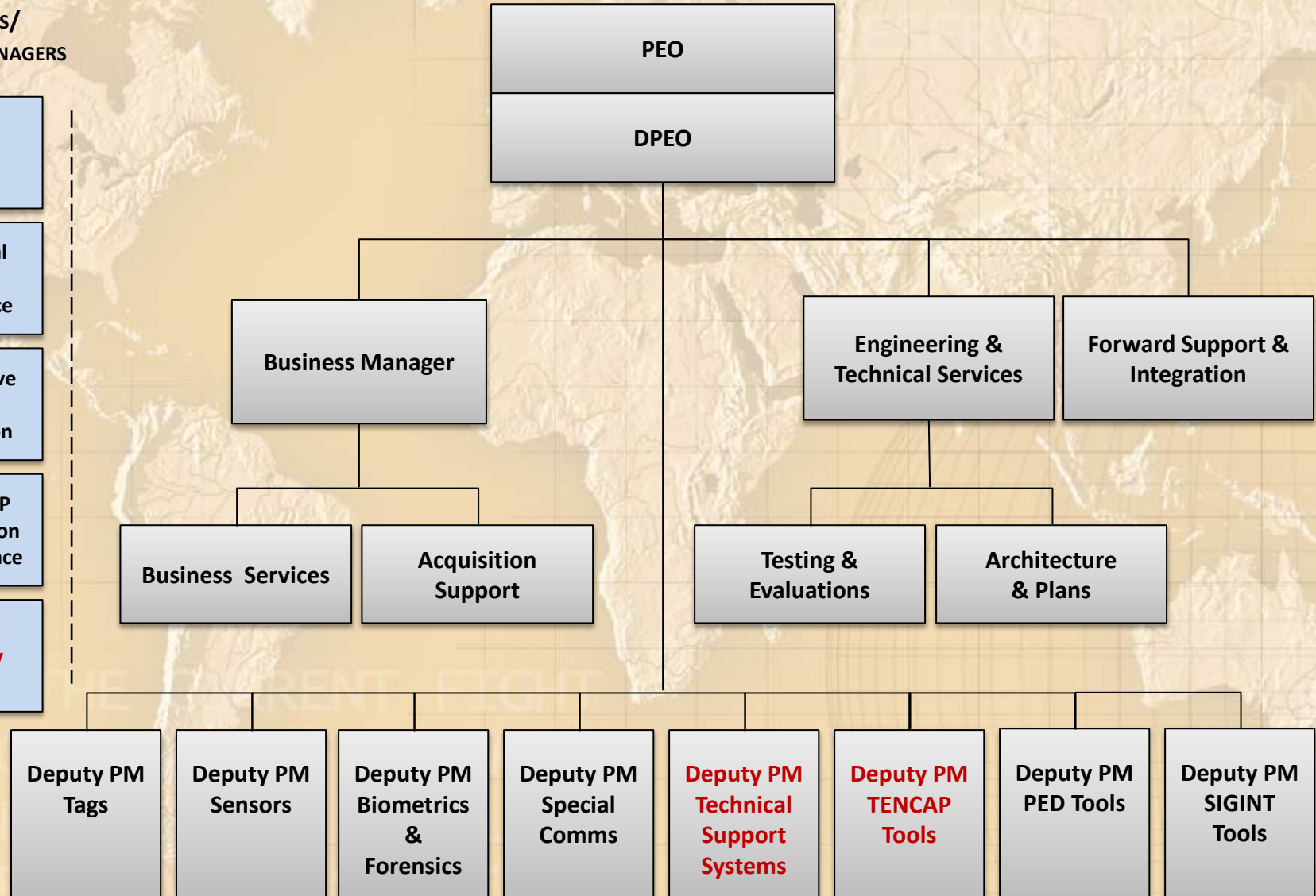
PM Intel

PM Special Recon & Surveillance

PM Sensitive Site Exploitation

PM MILDEP Special Recon & Surveillance

PM Rapid Capability Insertion



Rapid Capability Insertion Program

- TTL Device Size, Weight, Power, And Cost Reductions
 - RF And Non-traditional (E.G. Optical/Multi-band) Tags And R/Xs
- Unique LPI/LPD Communication Mechanisms
- Reprogrammable, Remotely-controlled Miniature Sensors (A/V/RF)
- Devices Able To Be Used In GPS-denied/GPS-mitigated Environments (i.e. Alternative Tracking Architectures)
- Stand-off/Remote Recognition And Matching
 - Iris/Facial/Other
- Non-optical Sensors For Fingerprinting Capture And Matching
- Alternate Power Sources And Power Management Equipment



Rapid Capability Insertion Program

- Clandestine Tagging Tracking And Locating (CTTL): Develops And Prototypes Innovative TTL Capabilities Through Applied Research And Development (R&D)
- Special Reconnaissance Capabilities (SRC): Provides R&D Of Novel Reconnaissance Devices, Special Communications Equipment And Unattended Ground Sensors
- Tactical Exploitation Of National Capabilities (TENCAP): Serves As The Command's TENCAP Office And Leverages Existing And Future Space-Related Technologies

ACQUISITION STRATEGY

Rapid Prototyping, Technology Demonstration, Combat Evaluations

PERIOD OF PERFORMANCE

Project Dependent: Focus on 16 – 18 Month Project Lifecycle

MILESTONES

Project Dependent

POINT OF CONTACT

Maj Ryan Hall - (813) 826-7402
Ryan.hall@socom.mil
 Glen Cullen - (813) 826-7467
Glen.cullen@socom.mil

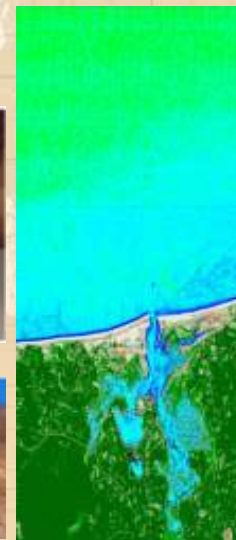
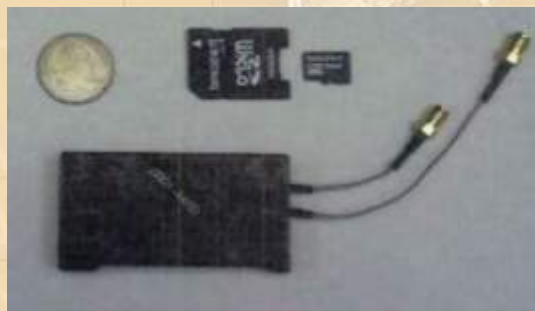
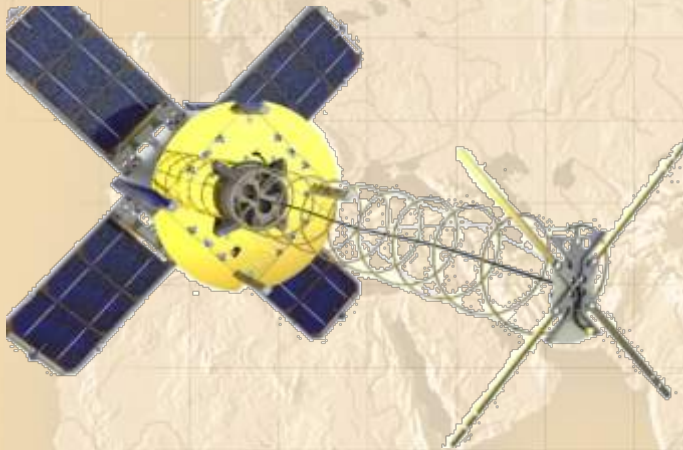
FUNDING

	FY13	FY14
CTTL	\$32.4M	\$28.2M
SRC	\$12.2M	\$8.9M
TENCAP	\$0.8M	\$0.8M

CURRENT CONTRACT/OEM

Project Dependent

Rapid Capability Insertion Program



Business Opportunities

- Focused on RDT&E projects (6-18 month delivery timeline)
- Examples of opportunities:
 - TILO Process
 - Broad Area Announcement HG9222-10-BAA-SORDAC-KI
 - TNT Experimentation

WIN THE CURRENT FIGHT
THE GLOBAL SOF NETWORK
THE FORCE AND FAMILIES
RESPONSIVE RESOURCING

In-House Broad Agency Announcement (BAA)

- FY2011-2012 SORDAC Consolidated BAA (HG9222-10-BAA-SORDAC-KI)
 - Efficient Contract For Relevant RDT&E Efforts
 - Updated Annually Within Special Reconnaissance, Surveillance, And Exploitation (SRSE) Areas Of Technological And Scientific Importance
 - Valid Through 2014



Questions?

WIN THE CURRENT FIGHT
THE GLOBAL SOF NETWORK
THE FORCES AND FAMILIES
RESPONSIVE RESOURCING