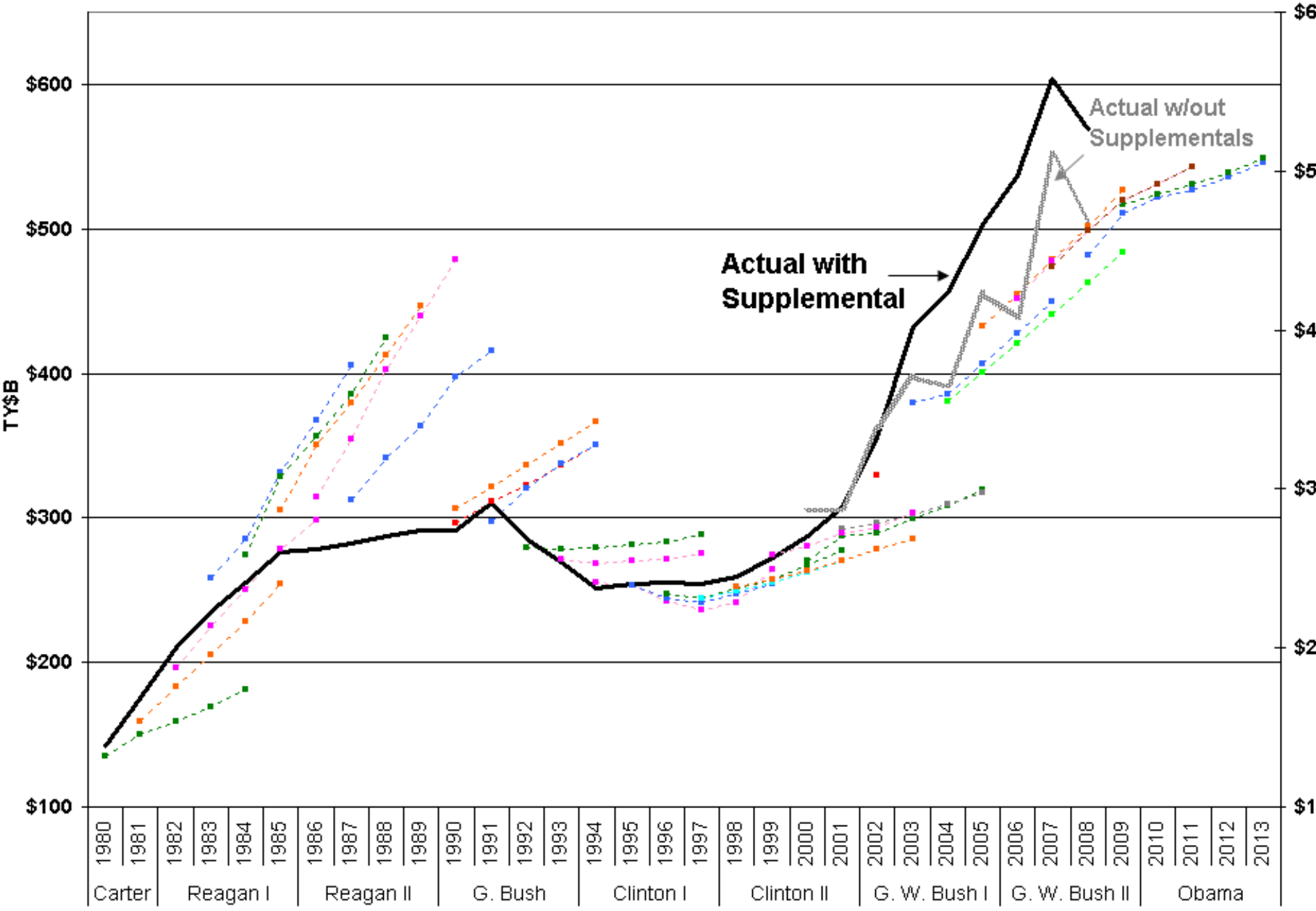


**President's Budget FYDP Projections vs. Actual Defense Budget FY80-09 (TY\$B)**



Fiscal Year

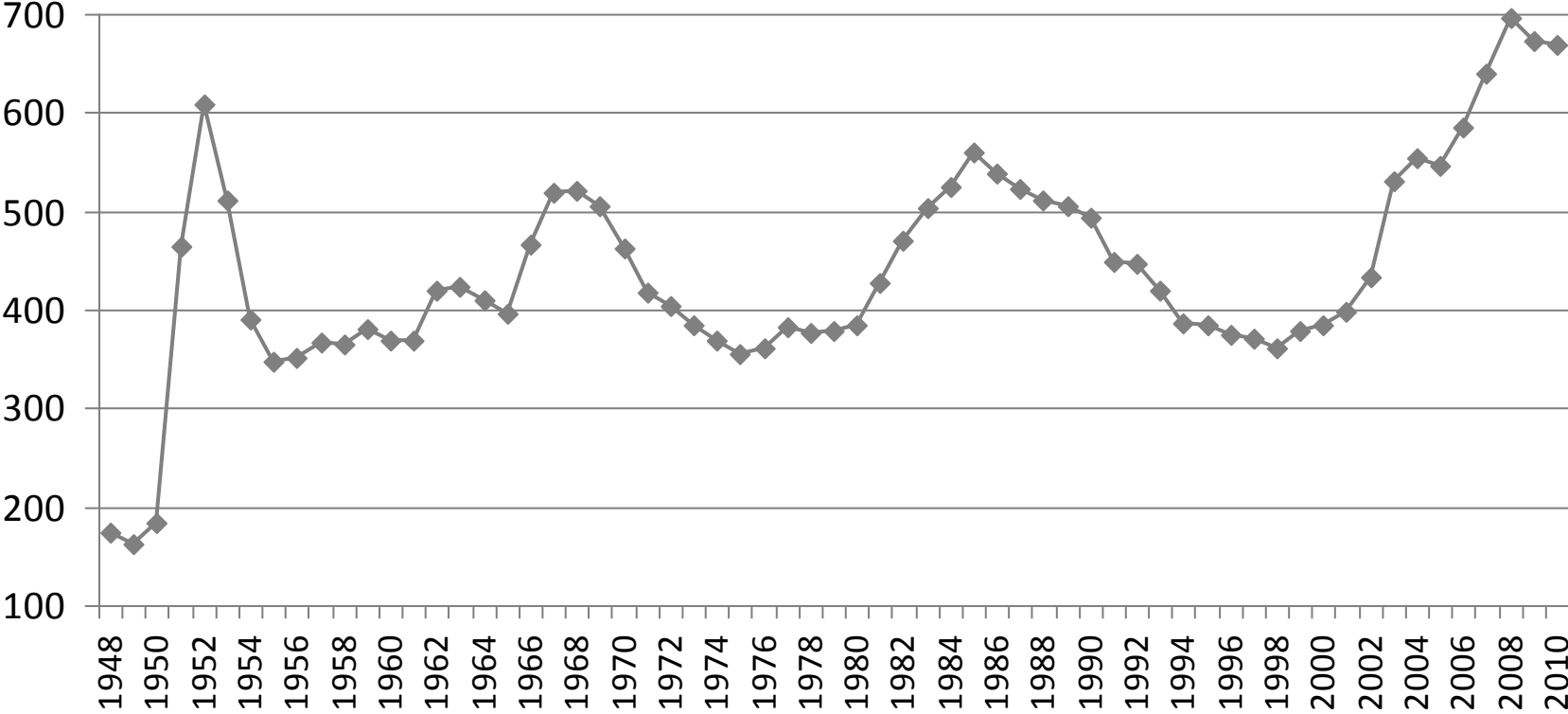
# DoD Budgets over Time

Category	End of Carter	End of Reagan	End of Bush	End of Clinton	End of GW Bush	Obama	Change 1980-2010	Change 1988-2010
	1980	1988	1992	2000	2008	2011		
Total Budget Authority (\$B - Constant \$)	\$383	\$518	\$451	\$381	\$694	\$553	44%	7%
Total Budget Authority (\$B - Current \$)	\$142	\$288	\$285	\$287	\$672	\$553	289%	92%
Supplementals (\$B)	\$0	\$0	\$4	\$0	\$190	\$159		
Active Duty Personnel (K)	2,101	2,209	1,886	1,449	1,406	1,484	-29%	-33%
Reserve and Guard Personnel (K)	851	1,158	1,135	865	843	845	-1%	-27%
DoD Civilian Personnel (K)	1,019	1,090	1,006	698	671	785	-23%	-28%
Active in Commission Ships	521	573	471	341	282	284	-45%	-50%
Army Divisions (active)	19	20	20	10	10	10	-47%	-50%
AF Fighter/Attack (Total Active Inventory)	2,789	3,027	2,000	1,666	1,460	1,280	-54%	-58%

Source: National Defense Budget Estimates for FY 2011, April 2010

# U.S. DoD Budget Authority

(Including Supplementals and OCO)  
Constant \$FY10 (billions)



Source: DoD FY2010 Greenbook