

# Special Operations Forces



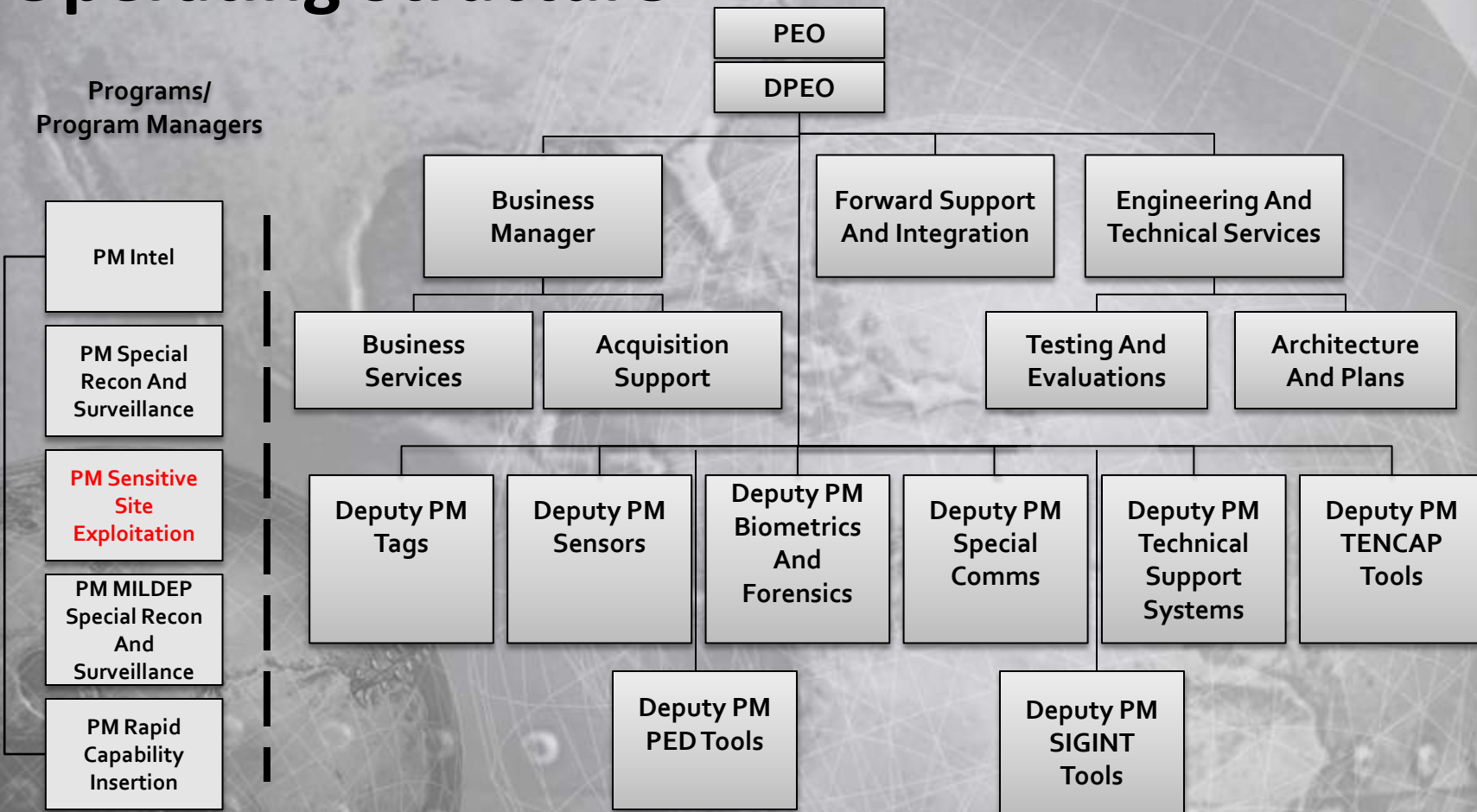
## Industry Conference

Program Manager –  
Sensitive Site  
Exploitation

**SPECIAL RECONNAISSANCE, SURVEILLANCE, AND EXPLOITATION**



# Operating Structure







## Sensitive Site Exploitation (SSE)

- Capability To Exploit Personnel, Documents, Electronic Data, And Material On A Sensitive Site/Objective
- Collects And Transmits Unique, Measurable Biometric Signatures

### Acquisition Strategy

- Commodity Procurement Program

### Period of Performance

- Variable, Fields Multiple Configurations Of Biometric And Forensic Kits To Components

### Milestones

- Kit Selection: Annually
- User Testing: Quarterly
- Commodity Procurements: Annually
- New Equipment Training: Continuously
- Fielding And Deployment: Continuously

### Point of Contact

- (813) 826-7429

### Funding

- FY12: \$14.0M
- FY13: \$11.8M

### Current Contract/OEM

- Multiple - Contact TILO



# Sensitive Site Exploitation (SSE)

## Kit Components



Cross Match SEEK  
Fingerprint And Iris Imager

### Enrollment (EN) Kit



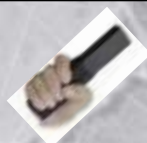
Cross Match Guardian-R  
Fingerprint Scanner



Cross Match SEEK  
Fingerprint And Iris Imager

### Identification (ID) Kits

## Biometrics



Metal Tec 1500  
Metal Detector



Field Forensics EL-100  
Explosives And Trace Element  
Detection



Bode  
DNA Swab



Lynn Peavey  
Collection Kit



BattleLite  
Forensic Lights

### DNA and Latent Print Collection



3G SIMIS



XRY/XACT

### CELLEX



ADF G-2

### Low-Level MEDEX



Tableau TD-1  
Imager



Digital Intelligence  
FRED-L

### High-Level MEDEX

### Data and Information Extraction

## Tactical Site Exploitation (Forensics)





# Exploitation Analysis Center (EAC)



Latent Print Copy Station



EAC Shelter  
(Part 1 of 2 Part Shelter)



Griffin 460



Latent Print Fuming Chambers



Latent Print Examiner



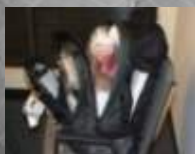
AFIX Tracker



AHURA  
First Defender



AHURA  
TruDefender



Latent Print  
Collection Kit



BattleLite  
Forensic Lights



TracER Laser Lite



SABRE 4000

## Latent Print Extraction Modalities

## Trace Element Analysis Modalities



# SSE Forensic Kit Acquisition Plan

<b>OA Kits</b>	<b>FY10</b>	<b>JUONS</b>	<b>FY11</b>	<b>FY12</b>
<b>USASOC</b>	<b>331</b>	<b>137</b>	<b>109</b>	<b>266</b>
<b>MARSOC</b>	<b>42</b>	<b>6</b>		
<b>TOTAL</b>	<b>373</b>	<b>143</b>	<b>109</b>	<b>266</b>
<b>Enabler Kits</b>				
<b>USASOC</b>	<b>64</b>	<b>25</b>	<b>21</b>	<b>58</b>
<b>MARSOC</b>	<b>17</b>			
<b>NSWC</b>	<b>63</b>	<b>21</b>		
<b>TOTAL</b>	<b>144</b>	<b>46</b>	<b>21</b>	<b>58</b>
<b>EAC</b>				
			<b>7</b>	<b>2</b>





# SSE KIT CERP PLAN

<u>KIT TYPE</u>	<u>FY12</u>	<u>FY13</u>	<u>FY14</u>	<u>FY15</u>	<u>FY16</u>	<u>FY17</u>	<u>FY18</u>
BIO ID	251	266	266	266	266	266	266
BIO ENR	83	91	91	91	91	91	91
FOR OA	9	10	223	223	223	223	223
FOR ENA	4	4	46	46	46	46	46
EAC				2	2	2	2



## Initiatives

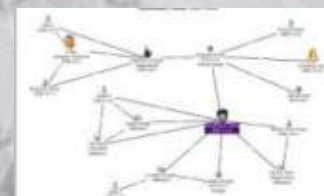
- **Rapid DNA Development Project**



- **New CELLEX Computer Selection**



- **CELLEX Analysis Tool Addition**



- **New Trace Explosive Detection Tool**







# What We Need From Industry

- **Biometric Capabilities**
  - » **Non-optical Imaging Sensors For Fingerprint Capture And Matching**
  - » **Rapid DNA Matching**
  - » **Stand-off/Remote Facial Recognition And Matching**
  - » **Stand-off/Remote Iris Capture**
  - » **Dustless Latent Print Collection**
  - » **Deception Detection**



# What We Need From Industry

- **Forensic Capabilities**
  - » **Hidden Chamber And Hidden Material Detection**
  - » **NRT Document/Cellular Phone Translation/Gisting**
  - » **Removal Of GSR Positives From Explosives Detection**
  - » **Improved Presumptive Tactical Explosives/Nitrates/Narcotics Kits**
  - » **Cellular PIN Code Bypass Or Cracking Technology**
  - » **Improved Cellular Exploitation Middleware**
  - » **Improved Format Exports For Presumptive Chemical Analysis, I.E. AHURA/HAZMAT ID**





**Questions?**