

Special Operations Forces

Industry Conference



CAPT Tim Kelly

Program Executive Office

Maritime

A collage of maritime operations. On the left, a diver in a green wetsuit and mask works on a large, rusted metal structure underwater. In the center, a large globe is visible. On the right, a black inflatable boat with several crew members and a mounted machine gun is on the water. Another globe is visible in the background.

MARITIME SYSTEMS

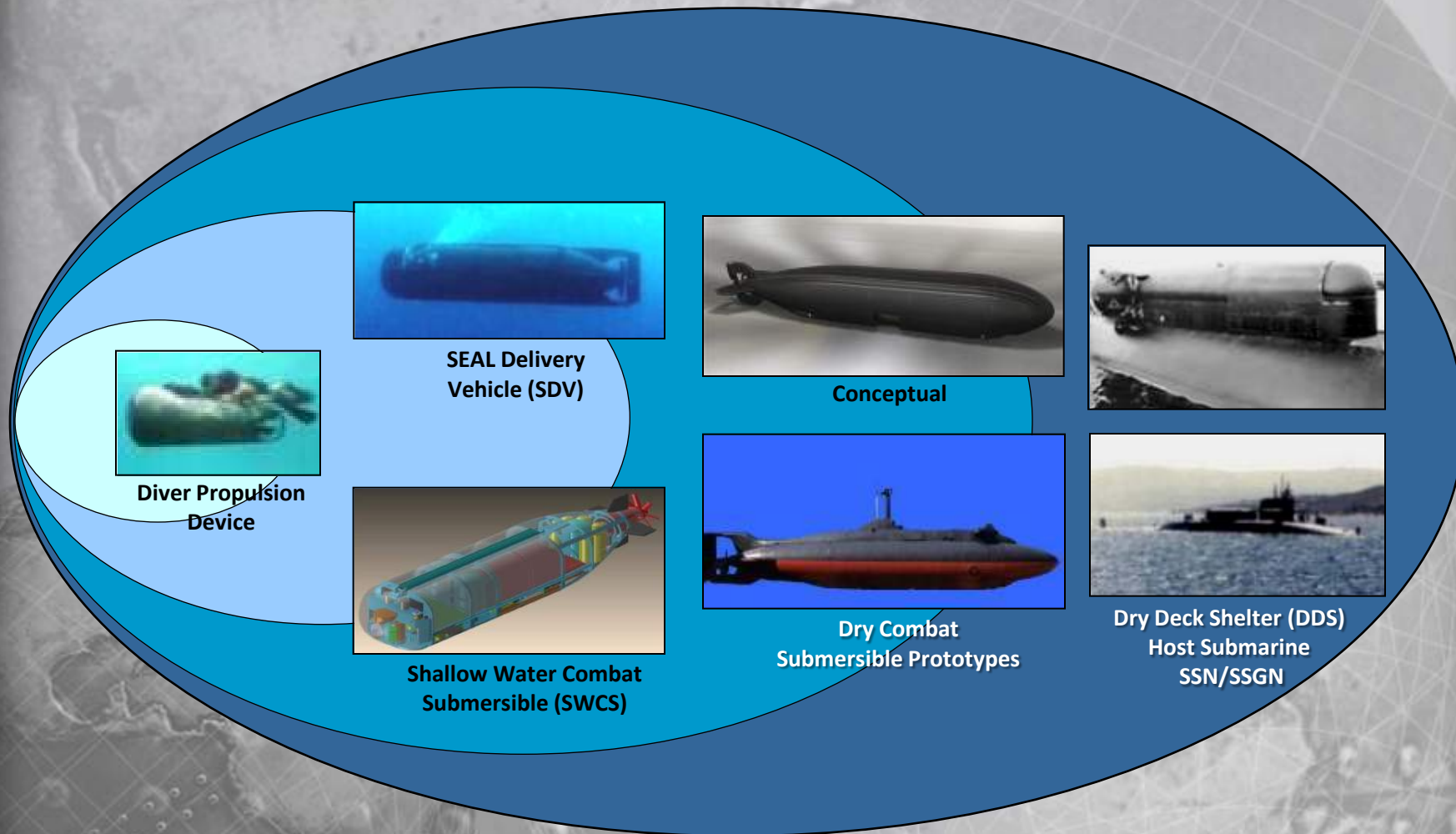


Technology/Capability Areas of Interest

- Undersea Vehicle Energy Storage Systems
- Advanced Surface Craft Power Systems
- Combat Swimmer Thermal Protection Systems
- Lightweight, Small Volume, CO2 Removal Technology for Underwater Breathing Apparatus and Undersea Platforms
- Secure Wireless Intercom System
- High Speed Communications



Undersea Mobility Systems



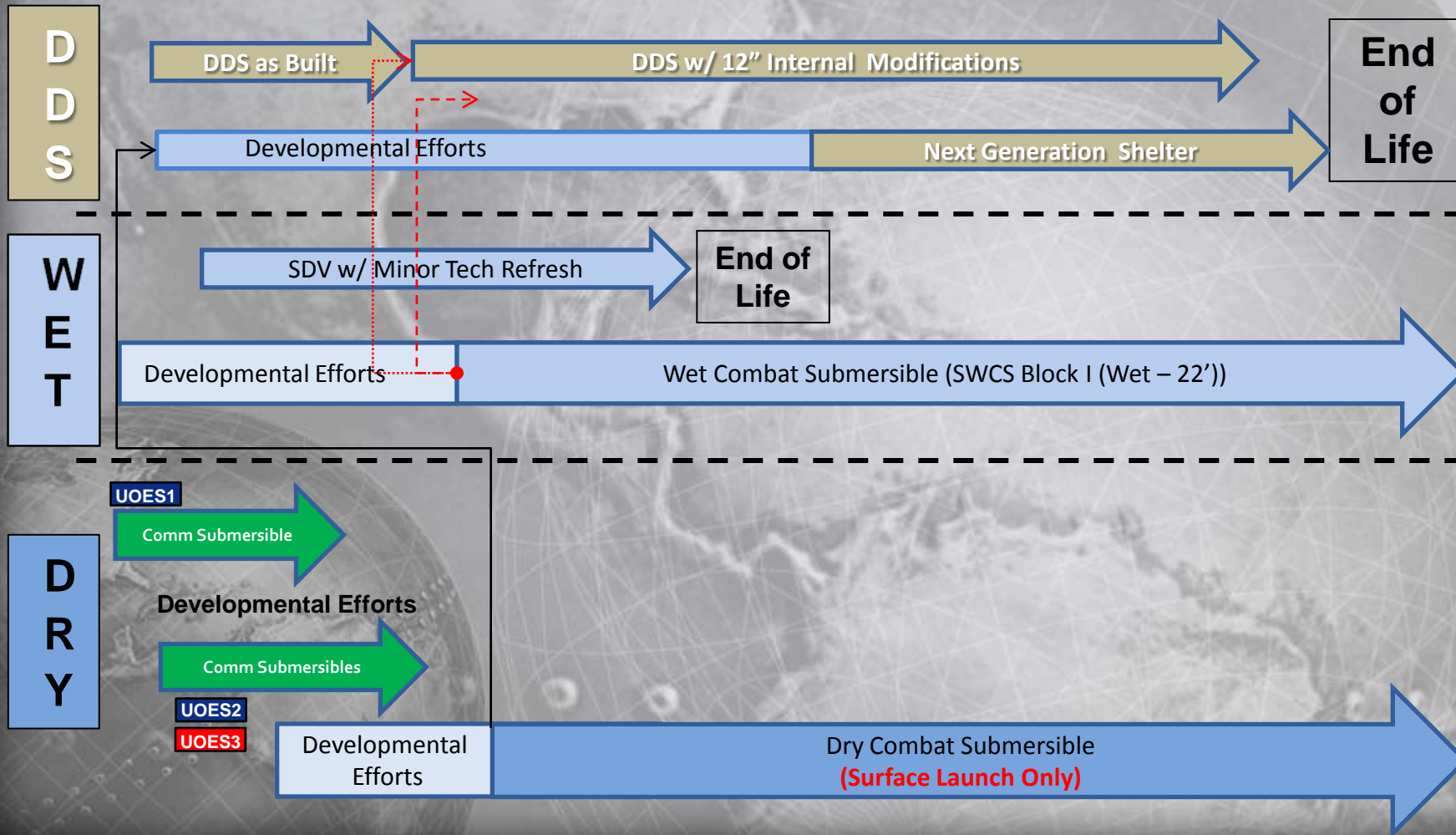


MARITIME



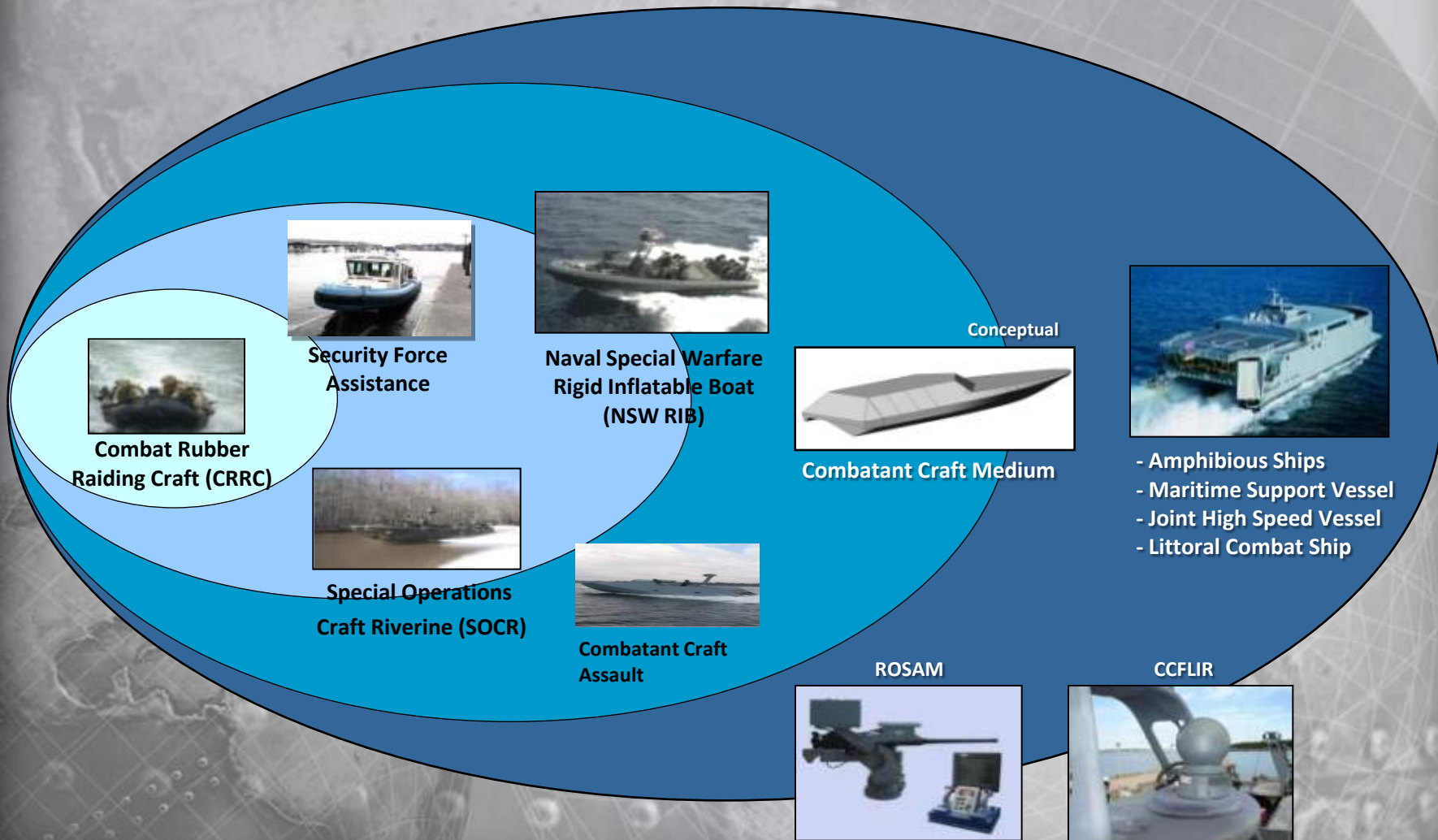
NSW Undersea Roadmap

2010 2012 2014 2016 2018 2020 2022 2024 2026 2028





Surface Mobility Systems





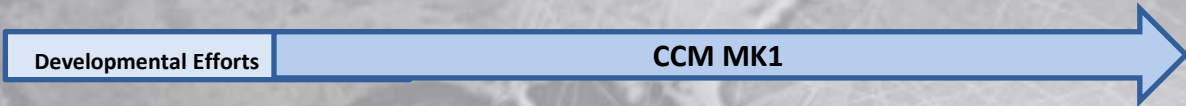
MARITIME



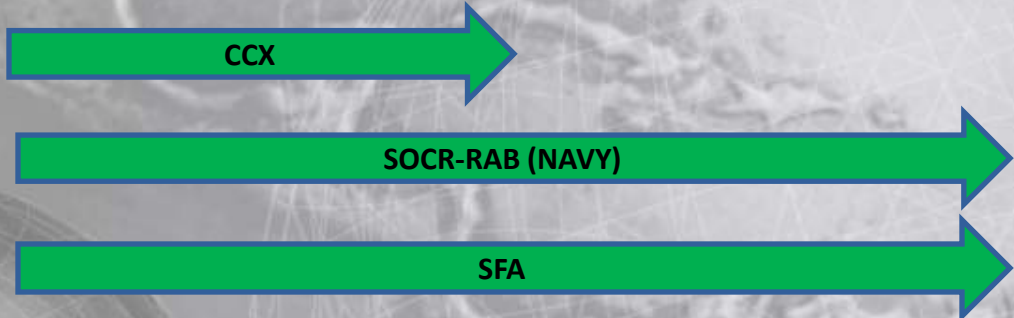
NSW Surface Roadmap

2010 2012 2014 2016 2018 2020 2022 2024 2026 2028

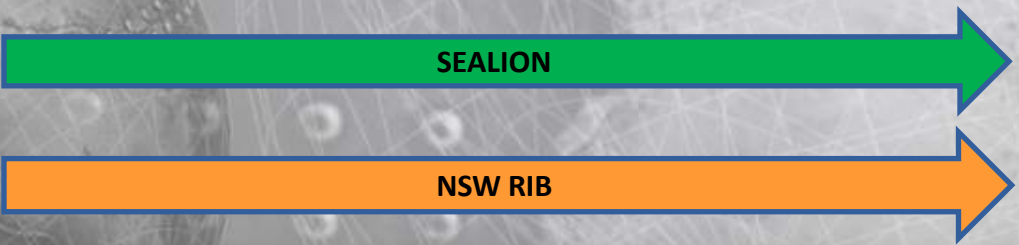
D
E
V
E
L
O
P
M
E
N
T



P
R
O
C
U
R
E
M
E
N
T



S
U
S
T
A
I
N
M
E
N
T





SEAL Delivery Vehicle (SDV MK8)

Wet Submersible Capable of Clandestine Operations and Insertion/Extraction of 6 SEALs and Mission Equipment in a Hostile and/or Denied Environment



Technology Upgrades/Current Efforts:

- Improved Onboard Computer Systems
- Increase Sonar Capability
- Increased Battery Endurance
- Diver Thermal Protection

Dry Deck Shelter (DDS)



Certified Diving System That Attaches to Modified Host Submarines and Supports SDV, Combat Rubber Raiding Craft and Mass Diver Lock In/Out Operations While Submerged



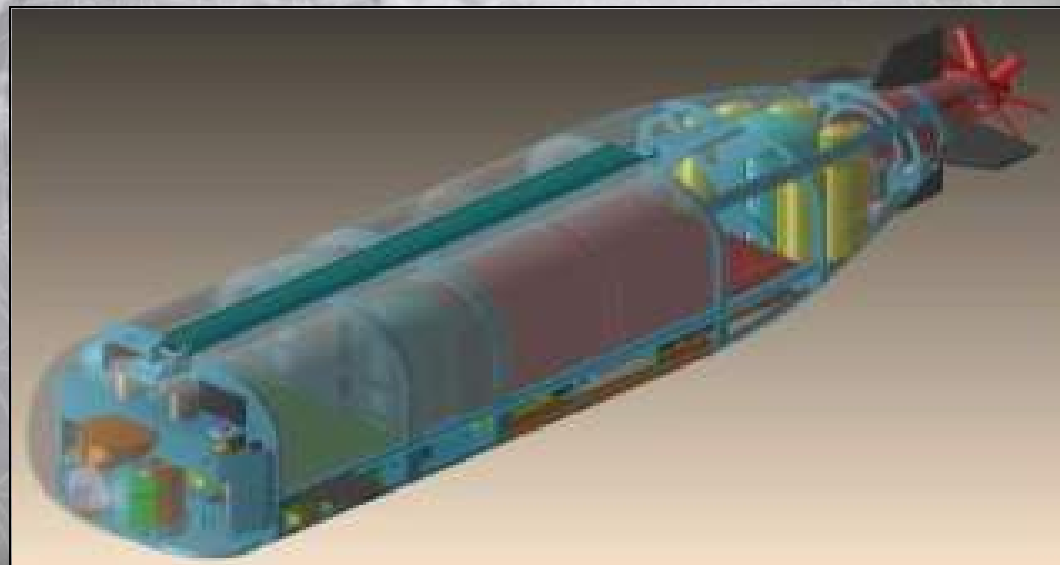
Technology Upgrades/Current Efforts:

- Service Life Extension Study
- Next-Generation DDS AoA
- Improved Track and Cradle System
- Modifications to Support Shallow Water Combat Submersible (SWCS)



Shallow Water Combat Submersible (SWCS)

- Manned Submersibles with Enhanced Capabilities to Conduct SOF Insertion and Extraction in Hostile and/or Denied Environments
- SWCS is a Wet Combat Submersible that will Replace the SEAL Delivery Vehicle Mk VIII Mod 1





Combatant Craft Assault (CCA)

Medium Range Maritime Interdiction of SOF in Medium/High Threat Environment. Also Supports Coastal Patrol and Insertion Extraction Operations. Serves as an interim bridge between NSW RIB and CCM.

Technology Upgrades/Current Efforts

- Use of SPRINT Composite Technology
- High Performance Diesel Engines
- Reduction of Logistical footprint/parts tracking

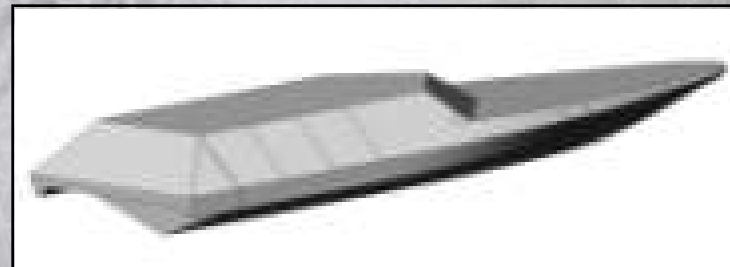




Combatant Craft Medium Mk1

The CCM MK1 is the replacement for the MK V Special Operations Craft and NSW RIB. The CCM MK1 will be a multi-role surface combatant craft with the primary mission of inserting and extracting SOF in low-to-medium threat environments. CCM MK1 is envisioned as an essential step in providing a modern, clandestine, agile, adaptive, and operationally capable maritime craft as a force multiplier within the SOF structure.

- Down select to two vendors: USMI, OIW
- Schedule: To be discussed at kick-off meetings





Naval Special Warfare Rigid Inflatable Boat



Short Range,
Ship-to-Shore
Insertion/ Extraction
of SOF Personnel in
a Low to Medium
Threat Environment

Technology Upgrades/Current Efforts:

- Currently in Sustainment
- AFT Lifting Body (S&T Effort)
- Integrated Bridge System (IBS) (S&T)
 - Mobile Distributed Common Architecture (MDCA)





Special Operations Craft Riverine



Short Range Insertion and Extraction of SOF and Waterborne Special Reconnaissance in a Riverine and/or Littoral Environment

Technology Upgrades/Current Efforts:
– Advanced Lightweight Armor Protection





Combatant Craft Forward Looking Infrared



Ruggedized, Marinized, Light Weight, Gyro Stabilized, Cryogenically Cooled, Color & Infrared Camera, Laser Range Finder & Pointer

Technology Upgrades/Current Efforts:

- Software Upgraded to Reduce Display Clutter/ Enabled all Output Protocols/Improved Tracker Function
- Implementation of Joy Stick Control Unit (All NSW Craft)
- R&D Efforts: 360 Degree Situational Awareness/Larger Focal Plane Arrays/Multispectral Arrays
- Integration with Stabilize Small Arms Mount (SSAM) to Improve User Interface





Competitive Acquisitions

Near Term:

- **Dry Combat Submersibles**
 - Fill the Requirement for a Dry, One Atmosphere, Diver Lock-In/Lock-Out Submersible
- **Combatant Craft Medium (CCM)**
 - Partial Replacement for Naval Special Warfare Rigid Inflatable Boat and MK V SOC

Mid-Term:

- **Special Operations Craft Riverine Next**
 - Replaces Existing Riverine Craft
- **Combatant Craft Forward Looking Infrared (CCFLIR) System – Next Gen**
 - Replaces Existing CCFLIR System
- **Security Forces Assistance (SFA) Craft**
- **Combatant Craft Assault (CCA)**



Dry Combat Submersibles (DCS)

- Investigate the Applicability of Low-Cost Commercial Technologies & Processes and Classing of These Types of Submersible Vehicles For Use in Harsh Special Operations Environments While Reducing Technical Risk
 - Will Leverage Proven Sub-Systems and Equipment from SDV and SWCS
- Develop a Preliminary Technical Design that Conforms to Government Objectives
- Prototyping to Refine Technical Requirements and Reduce Risk

Acquisition Strategy

- BAA for Prototyping
- Multiple Contract Awards
- Phase I: Concept Design & Development Plan
- Phase II: Detailed Design & Construction

Period of Performance

- FY 11 - FY19

Milestones

- Milestone A in 3rd Qtr FY11
- Milestone B ~FY15
- IOC - TBD

Point of Contact

- USSOCOM PM Undersea Systems
813.826.3193

Funding

- RDT&E: FY 12 - 15
- PROC: FY 15 - 19

Current Contract/OEM

- BAA Phase I: GDEB, LM, OII, L3
- BAA Phase II (S351): SG



Combatant Craft Medium (CCM)

- Multi-Role Surface Combatant Craft with the Primary Mission to Insert and Extract SOF in Medium Threat Environment
- USAF C-17 Transportable, Crew of 4 and Capable of Transporting 14-19 Passengers
- Partially Replaces Naval Special Warfare Rigid Inflatable Boat Capabilities and Approaches the Payload and Range of MK V Special Operations Craft

Acquisition Strategy

- Full and Open Competition
- Requirement for 30 Craft

Period of Performance

- Contract Award in FY11 with a 10 Year Period of Performance

Milestones

- Test Article delivery: Q3 FY13
- MSC: TBD
- IOC: TBD

Point of Contact

- USSOCOM, SORDAC, Surface Systems Program Management Office
813.826.3193

Funding

- RDT&E: FY 10 - 14
- PROC: FY 14 - 18

Current Contract/OEM

- Oregon Iron Works
- United States Marine Inc.



Special Operations Craft Riverine Next (SOCR)

- Riverine Surface Craft with the Primary Mission to Insert and Extract SOF Forces
- Secondary Mission of Reconnaissance and Surveillance
- SOCR Replacement will Use Present Technology in Terms of Hull Structure, Power Train, On-Board/Off-Board Sensors, and Armor to Increase Current Capabilities

Acquisition Strategy

- Full and Open Competition
- Projected Requirement for 24 CGR Systems

Period of Performance

- Current contract ends CY 14

Milestones

- TBD

Point of Contact

- USSOCOM SORDAC, Surface Systems Program Management Office
813.826.3193

Funding

- TBD

Current Contract/OEM

- USMI



Combatant Craft Forward Looking Infrared Replacement - NextGen

- **Situational Awareness System That Will Expand on the Capabilities of the Current CCFLIR by Using Additional Sensors to Provide Better Situational Picture**
- **CCFLIR Next Generation Will Be Used on All SOF Family of Mobility Systems legacy and future crafts**

Acquisition Strategy

- Full and Open Competition
- Requirement for All Combatant Craft

Period of Performance

- FY14 through FY19

Milestones

- TBD

Point of Contact

- USSOCOM SORDAC, Surface Systems Program Management Office
813.826.7516

Funding

- TBD

Current Contract/OEM

- None



Security Forces Assistance Craft (SFA)

- SFA Will Be Used in a Low and Permissive Threat Environment
- Used for Joint Training with Partner Nations
- Commercial-Off-The-Shelf Procurement

Acquisition Strategy

- Commercial-Off-the-Shelf (Non- Development Item)
- Requirement for 12 SFA Light and 5 SFA Patrol Coastal Variant

Period of Performance

- FY 10 - FY16

Milestones

- N/A - Commodity Procurement / GSA buys

Point of Contact

- USSOCOM SORDAC, Surface Systems Program Management Office
813.826.3193

Funding

- \$2M - \$5 M

Current Contract/OEM

- None
- Procurement July/Aug



Combatant Craft Assault

- Open Ocean Craft with the Primary Mission to perform medium/high threat Maritime Interdiction Operations
- Secondary Mission of Insertion/Extraction of SOF
- CCA uses state of the art technology to for performance, stealth and crew situational awareness

Acquisition Strategy

- Sole Source for 24 systems, expediency
- Logistical Portion to be completed, government to provide TDP

Period of Performance

- FY 10 though FY19

Milestones

- TBD

Point of Contact

- USSOCOM SORDAC, Surface Systems Program Management Office
813.826.3193

Funding

- TBD

Current Contract/OEM

- TBD

