



NAVAIR Range Complex

**Presented to
NDIA Conference
22 October 2009**

**Terry Clark
Director, NAVAIR Ranges**

Naval Air Systems Command

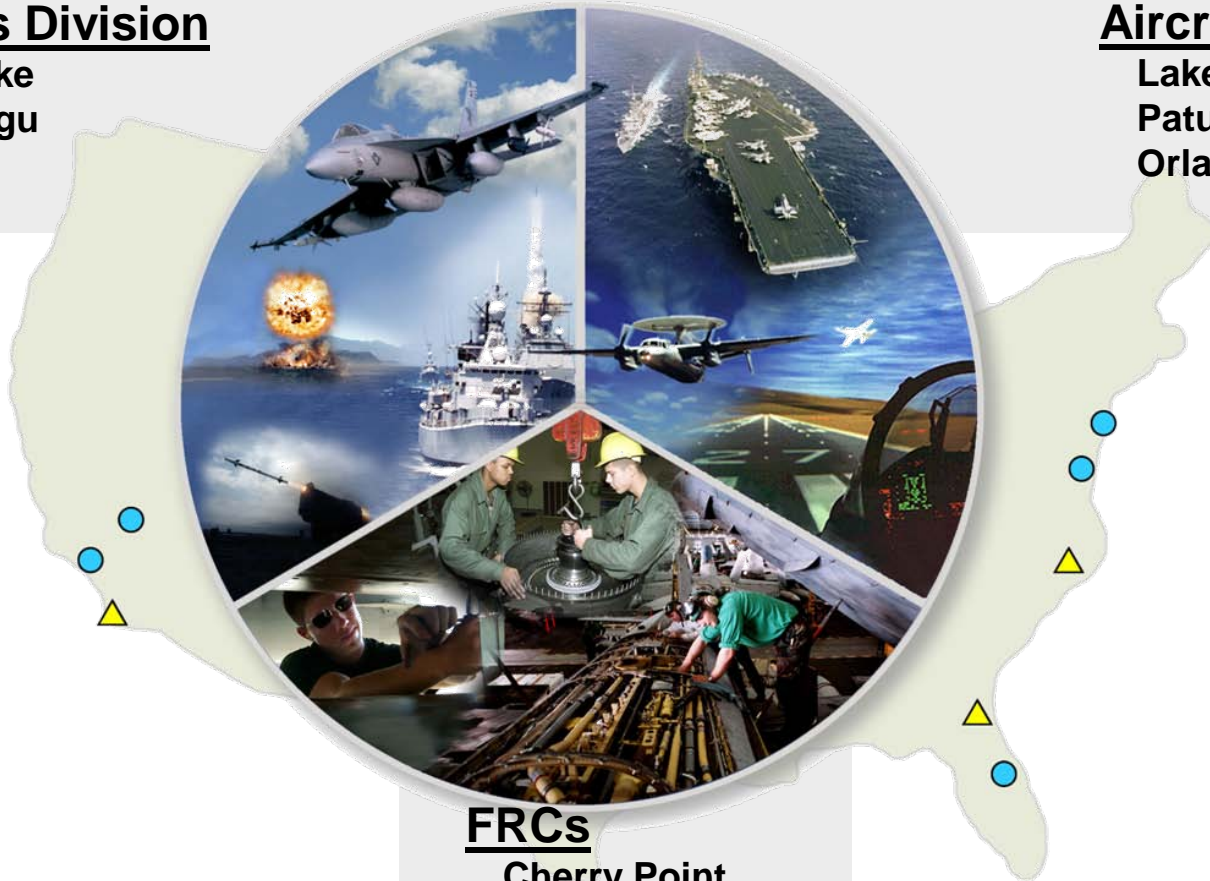


Weapons Division

China Lake
Point Mugu

Aircraft Division

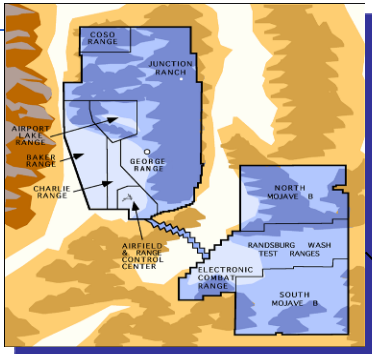
Lakehurst
Patuxent River
Orlando



FRCs

Cherry Point
Jacksonville
North Island

NAVAIR Ranges

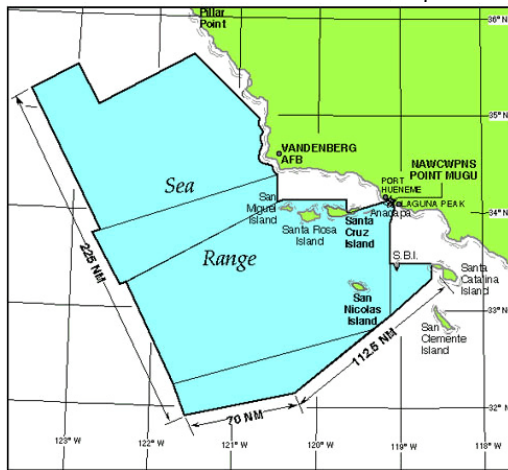


China Lake

**Weapons
Division**



**Aircraft
Division**



Point Mugu

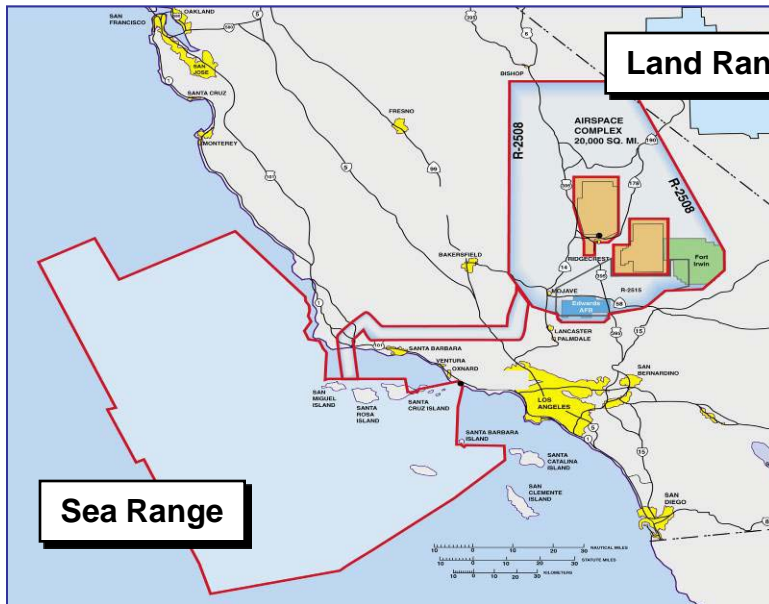


Patuxent River

NAVAIR Ranges



Pacific Ranges



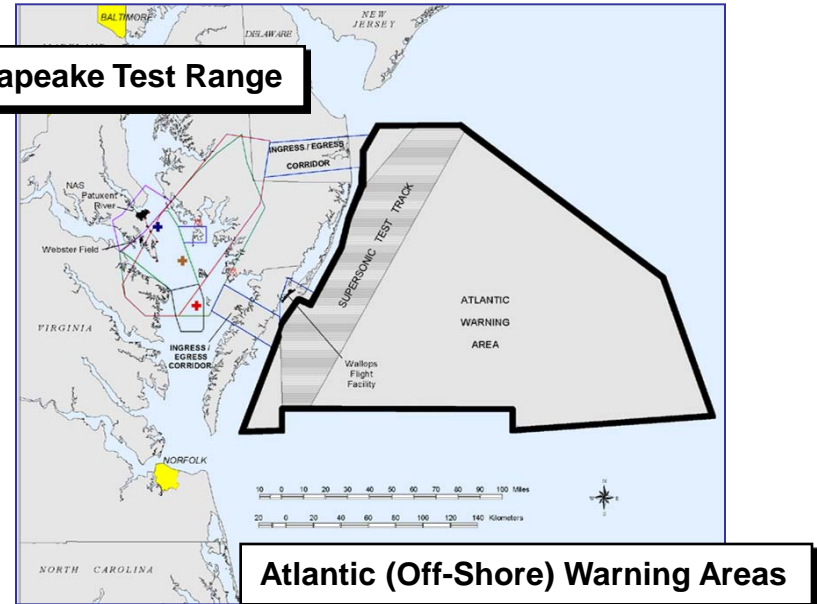
Land Ranges

Sea Range

36,000 sq mi controlled sea/airspace
125,000 sq mi instrumented

>1M acres land space
17,000 sq mi restricted airspace

Atlantic Ranges



Chesapeake Test Range

Atlantic (Off-Shore) Warning Areas

2,700 sq mi restricted airspace
Access to 30,000 sq miles of warning area



Provide for the safe and secure collection of *decision-quality* data. We...

- Develop, operate, manage and sustain interoperable, *MRTFB* open air, land and sea ranges for Fleet, NAE acquisition programs, DoD, and strategic allied partners' T&E and training events.
- Provide air vehicle and weapons systems modification and instrumentation.
- Schedule and control air, land, sea space and associated range operating areas.



- Evolve the separate ranges into a single Range Complex
 - Resulting in:
 - Transparency of test options to customers
 - Secure remote test data review
 - More flexible use of resources and resource sharing
 - Greater sharing of knowledge and capabilities across ranges



- A Strategic Roadmap with Initiatives to provide:
 - Increased knowledge and awareness of total range capabilities
 - Must penetrate further down in the organization
 - Common systems and families of systems
 - Inter-range connectivity with known attributes
 - Strong decisions on leader/follower capabilities
 - Single, open investment strategy
 - Common business practices

Change the culture from Competition to Cooperation

- Leveraging current strengths
 - Connection and leadership at West coast ranges
 - Positive impact to other service programs realized
 - Innovative culture at Atlantic Test Range
 - Cohesive Senior leadership team across all Range activities
 - Strong culture of continuous improvement
 - Naturally looking for “Best of Breed”



Provide Decision Quality Data to our customers as effectively, efficiently, and flexibly as possible in a resource constrained environment

Questions?

