

An aerial view of a fleet of ships, including several large aircraft carriers, moving in formation across a vast blue ocean. Above the ships, a formation of fighter jets is visible in the sky. The text "Welcome to Pacific Fleet" is overlaid in white, bold font.

Welcome to Pacific Fleet

Commander

A white medical ship with red crosses on its hull is sailing on the water. A large, vibrant rainbow arches over the ship against a blue sky with scattered clouds. The text "United States Pacific Fleet" is overlaid in white, bold font.

United States Pacific Fleet



Vision

A credibly led, combat-ready and surge-ready Fleet prepared in peace, crisis or war to advance Asia-Pacific regional security and prosperity through cooperation with common-purpose navies, by responding rapidly to crises, by deterring, or by defeating threats to security through decisive naval, joint, and combined operations.

Mission

U.S. Pacific Fleet advances Asia-Pacific regional security and prosperity by employing credibly led, combat-ready forces in naval, joint and combined operations in support of U.S. Pacific Command.



Guiding Principles

Credible Leadership. Warfighting Focus. Naval, Joint and Combined. Aligned.

Pacific Fleet Priorities

***Strengthen Warfighting Readiness.
Advance Regional Maritime Relationships.
Posture Forces for Agile Response.***



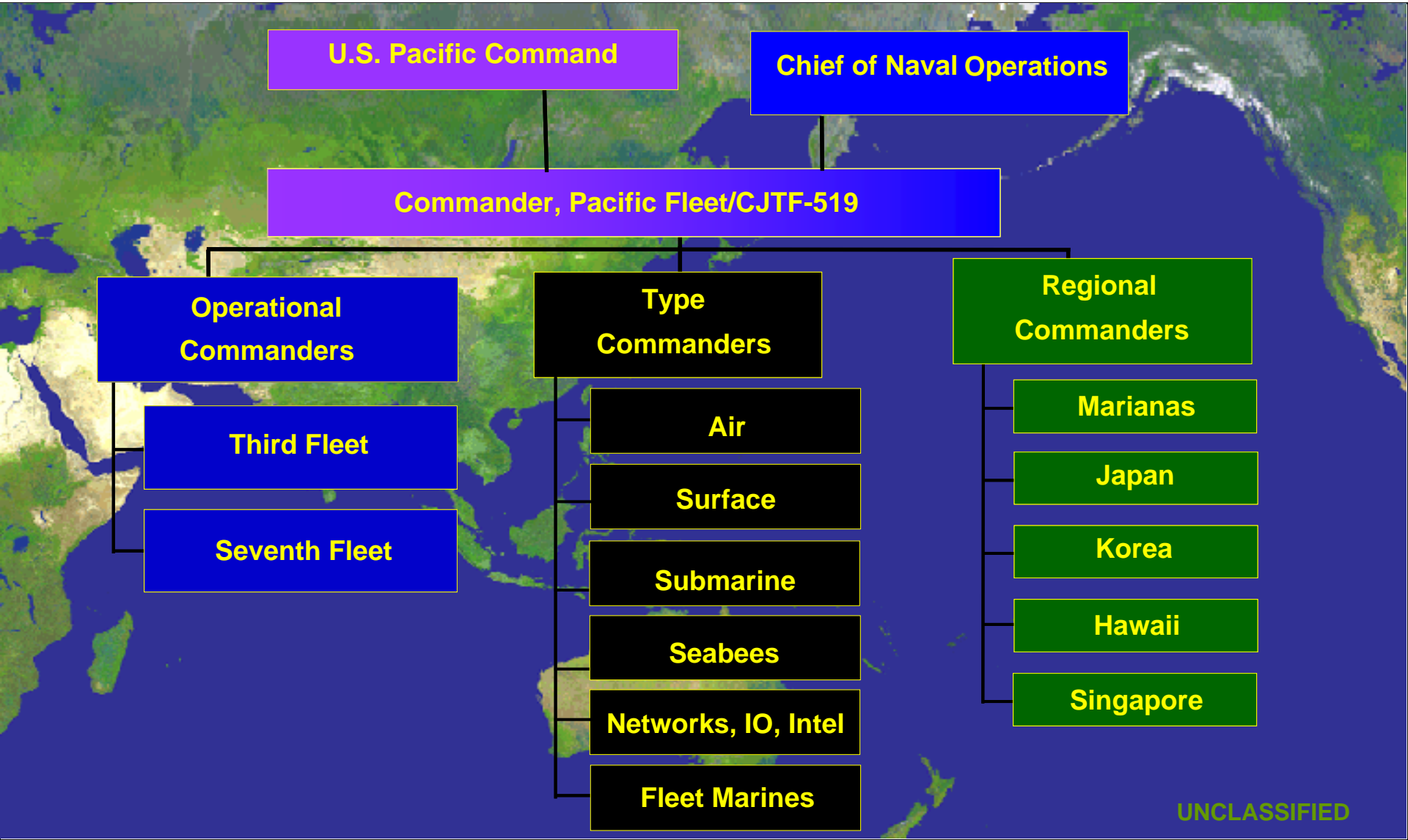
The U.S. Pacific Fleet



- **76 USN Ships**
- **34 Submarines**
- **62 MSC Ships**
- **1,296 Aircraft**
- **91,528 Navy Personnel**
- **93,000 Marines**
- **9,724 Reserves**
- **18,463 Civilians**



U.S. Pacific Fleet Organization





Type Commanders



Air



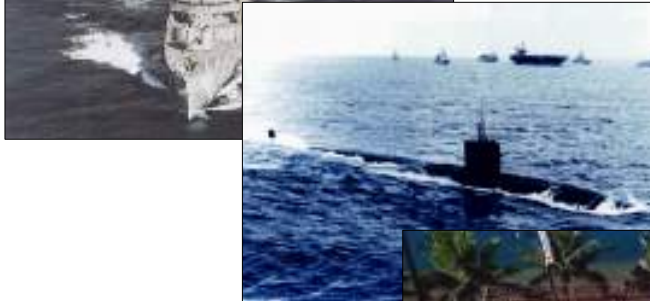
1296 Aircraft

Surface



76 USN/ 62 MSC Ships

Submarine



34 Submarines

Seabees



2,301 Seabees

Networks, IO, Intel



80,748 Fleet Marines

Fleet Marines



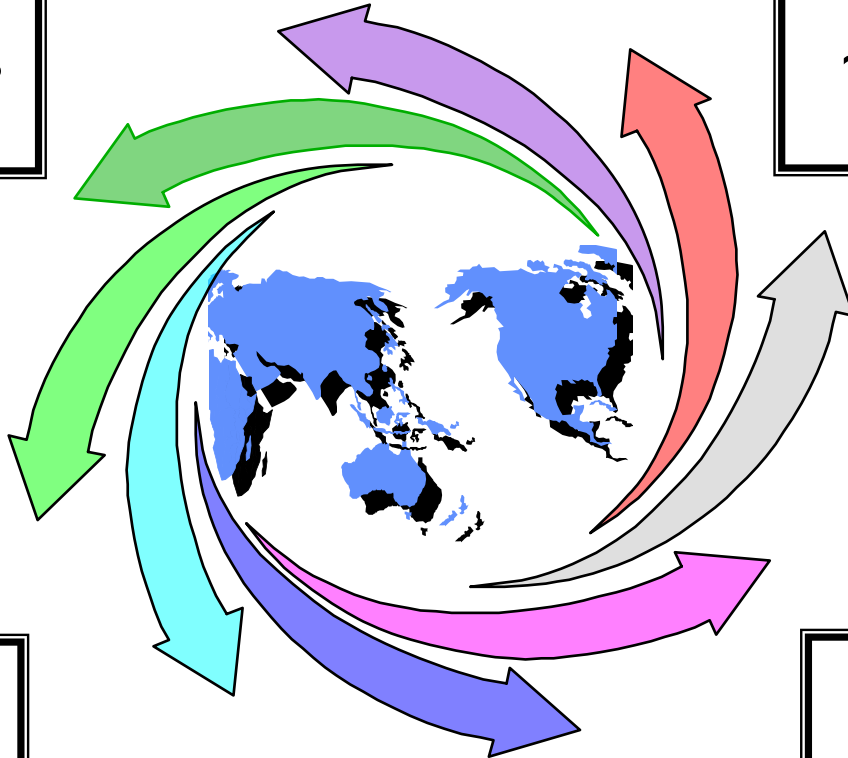


“The Pacific Century”



Geography
~ ½ of the earth's
surface

Demographics
~ 56% of world's
population

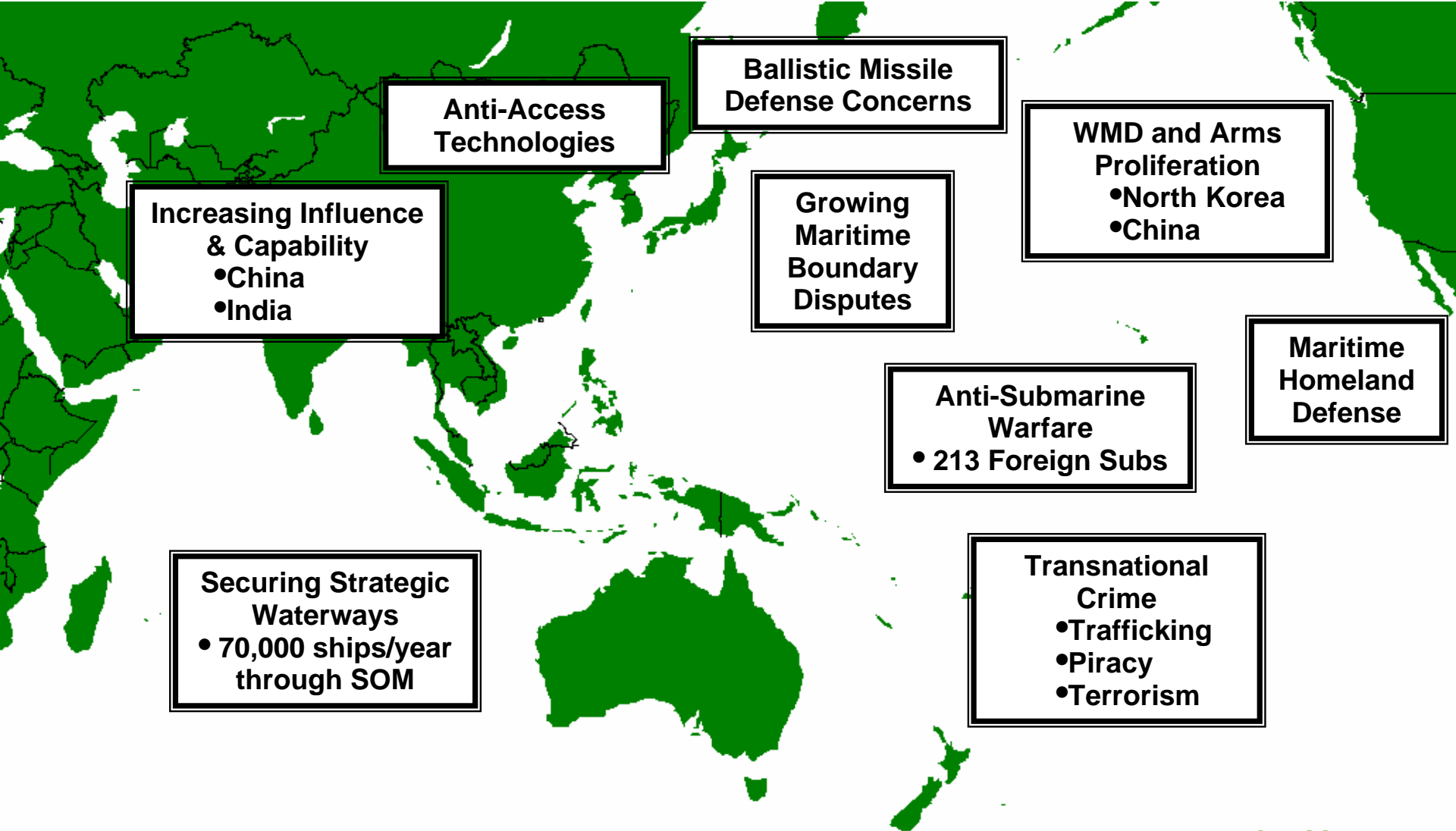


Economics
~ 33% of U.S.
two-way trade

Security
~ Six largest military
forces in the world



Strategic Environment

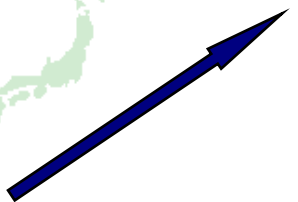




PACFLT Priorities



Guiding Principles
Credible Leadership
Warfighting Focus
Naval, Joint and Combined
Aligned



**Strengthen Warfighting
Readiness**



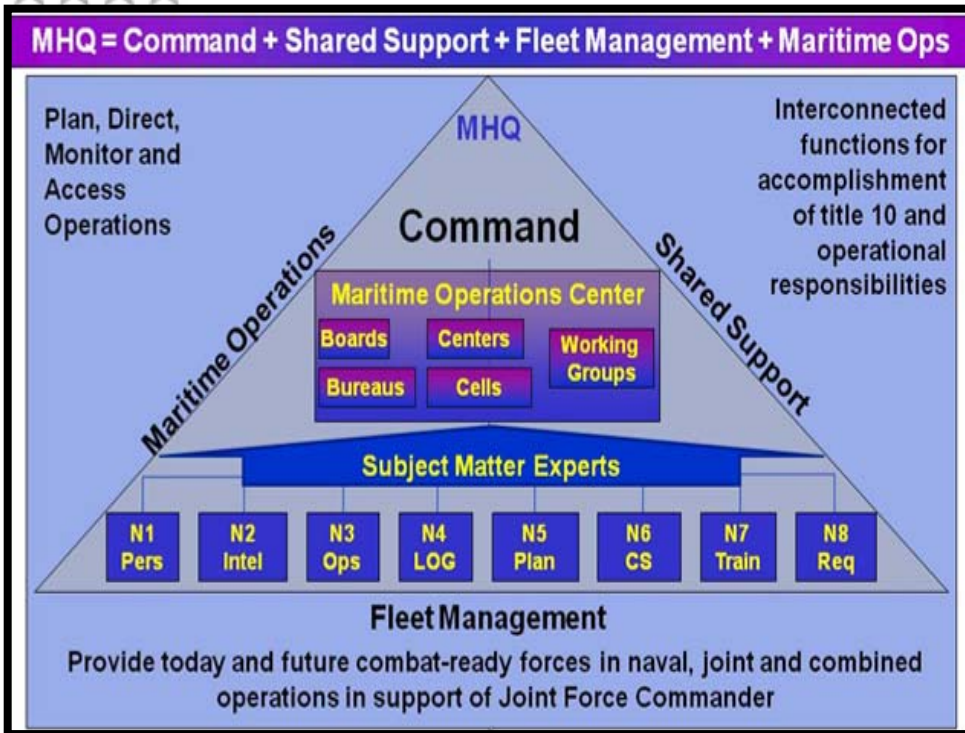
**Advance Regional
Maritime Relationships**



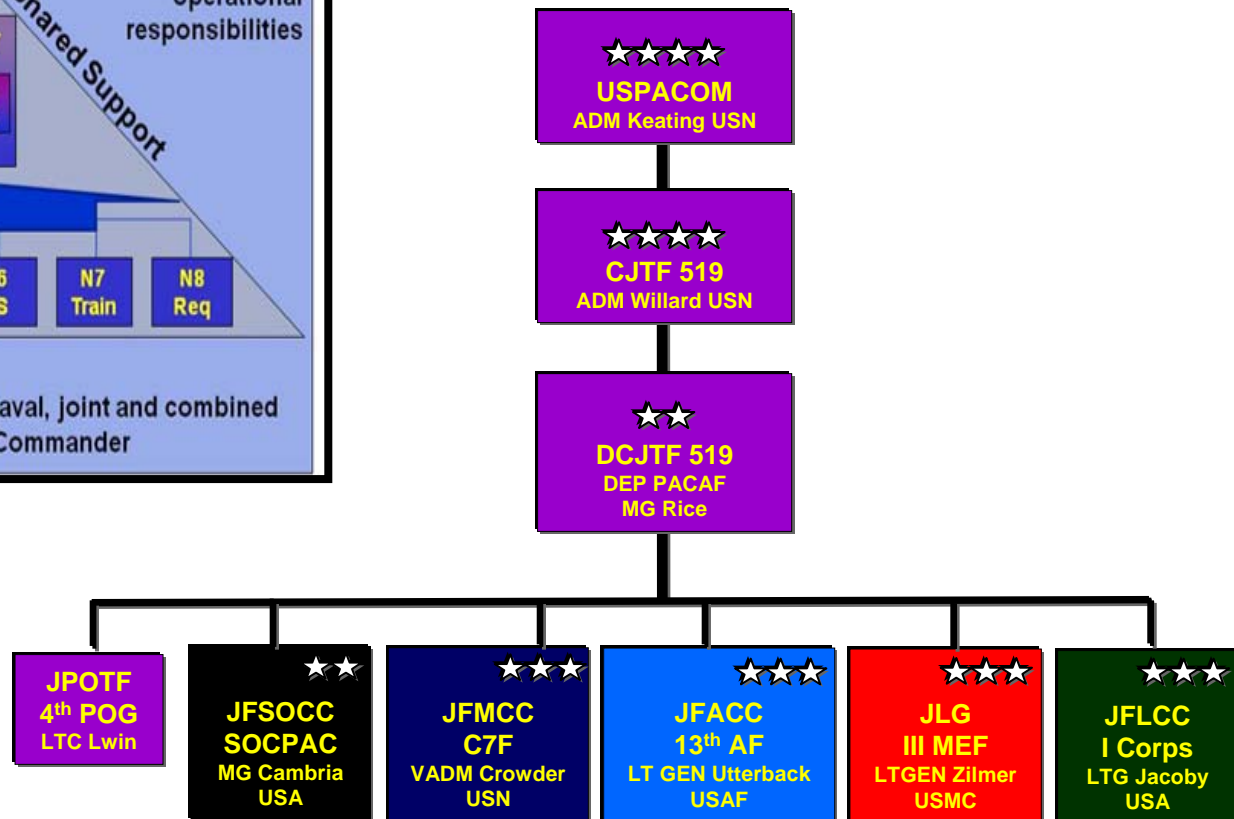
**Posture Forces for
Agile Response**



Strengthen Warfighting Readiness *CPF MHQ with MOC – JTF 519*



- Only 4-star led JTF in PACOM
- Truly joint construct



- People
- Process
- Infrastructure



Technology Interest Areas



ASW capabilities

- ASW Wide area cueing (UDNS)
- ASW Weapon Technologies
- Torpedo Defense
- ASW Synthetic Training

Networking Technologies

- Information sharing/ Multi-level security
- Alternative COMMS (SATCOM Vulnerability)

Electronic Warfare

- Counter IADS/ Counter ASCM
- Counter ISR
- Information Operations



Technology Interest Areas



Timely Intel reporting

- Red Situational Awareness
- Sense, Share Analyze, Report
- Operational Level Command and Control

MIW capabilities

- Rapid detection and avoidance

Surface Warfare

- Improved Anti-Ship Cruise Missile
- Persistent ISR/ OTH-T

Marine Mammals

- Mitigation Technologies
- Mammal behavioral science



Questions?

