



# *Preparing the Army Reserve for the Fight*

*Major General Alan Bell  
Deputy Commanding General  
U.S. Army Reserve Command*

*February 2007*



# *Vision Statement*

*The Army Reserve is a community-based federal operational force of skill-rich Warrior-Citizens providing complementary capabilities for joint expeditionary and domestic operations.*



# *Army Reserve Serving a Nation at War*

- 165,444** Army Reserve Soldiers mobilized since 9/11
- 28,586** Army Reserve Soldiers mobilized today
- 20** Different Countries that Army Reserve Soldiers are serving in

## **The Human Toll**

- 131** Army Reserve Soldier Deaths
- 943** Army Reserve Soldiers Wounded in Action
- 2** Army Reserve Soldiers Captured



# *Conditions Have Changed*

## **THEN**

- Discrete War
- War as Exception
- Mobilization of RC as Exception
- Whole Units
- Mass over Time
- AR-Supplementary Force
- Linear Battlefield
- Secure Rear Area
- Theaters of War

## **NOW**

- Continuous War
- War as Norm
- Mobilization of RC as Norm
- Kludged Units
- Ready Now
- AR-Complementary Force
- Asymmetrical Battlefield
- No Secure Rear Area
- Global Operations



# *Commander's Intent*

*It is my intent to ensure the Army Reserve continues to provide relevant, joint warfighting capabilities wherever and whenever the Nation requires.*

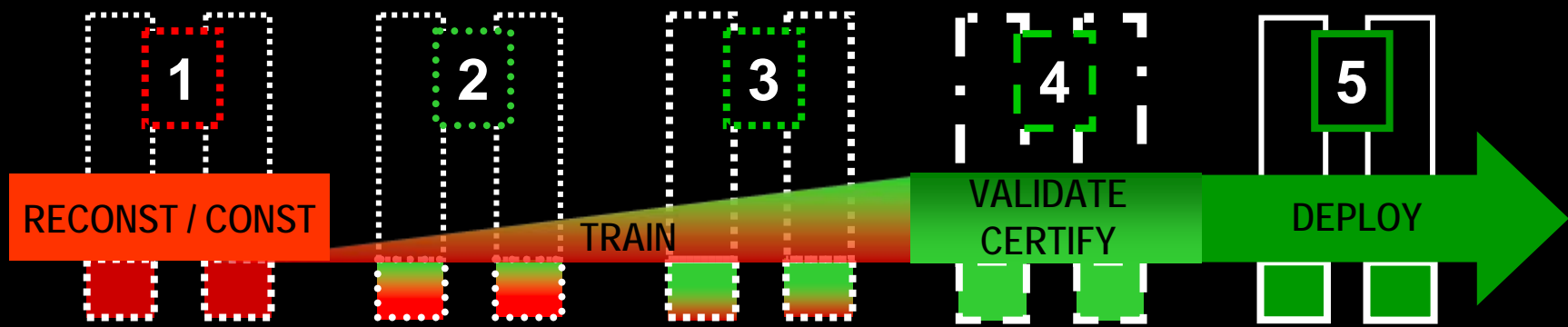
*--LTG Jack C. Stultz  
Chief, Army Reserve*



# Army Reserve Support to ARFORGEN

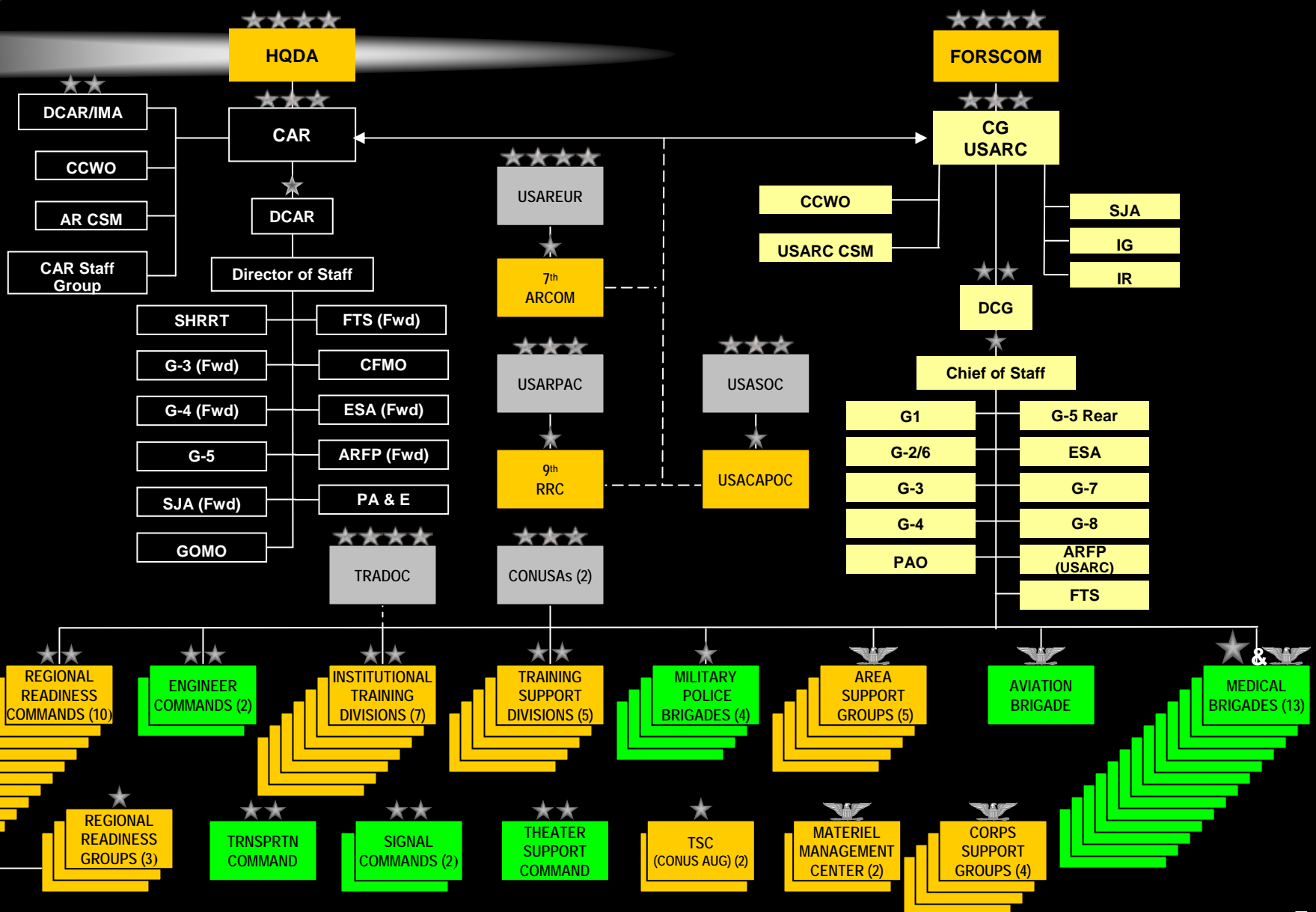
R/T - 1	R/T - 2	R/T - 3	Ready	Available
INDIVIDUAL	COLLECTIVE			
<ul style="list-style-type: none"><li>Individual Training</li><li>Combat veterans reintegrate</li></ul>	<ul style="list-style-type: none"><li>Army Reserve Function Exercise (Squad / Crew / Team Training)</li></ul>	<ul style="list-style-type: none"><li>External Evaluation</li><li>Units in Army Reserve Warrior Exercise (Company Team Training)</li></ul>	<ul style="list-style-type: none"><li>External Evaluation and Validation at Combat Training Center (or equivalent)</li><li>Battalion/Company External Evaluation</li></ul>	<ul style="list-style-type: none"><li>Mobilize</li><li>Mob Station Validation</li><li>Deploy</li><li>Operational Mission</li></ul>

Available for Possible Homeland Security Missions (size of unit/parts of unit needed to vary)      Mission in Theater Identified      Locked in for Theater Mission



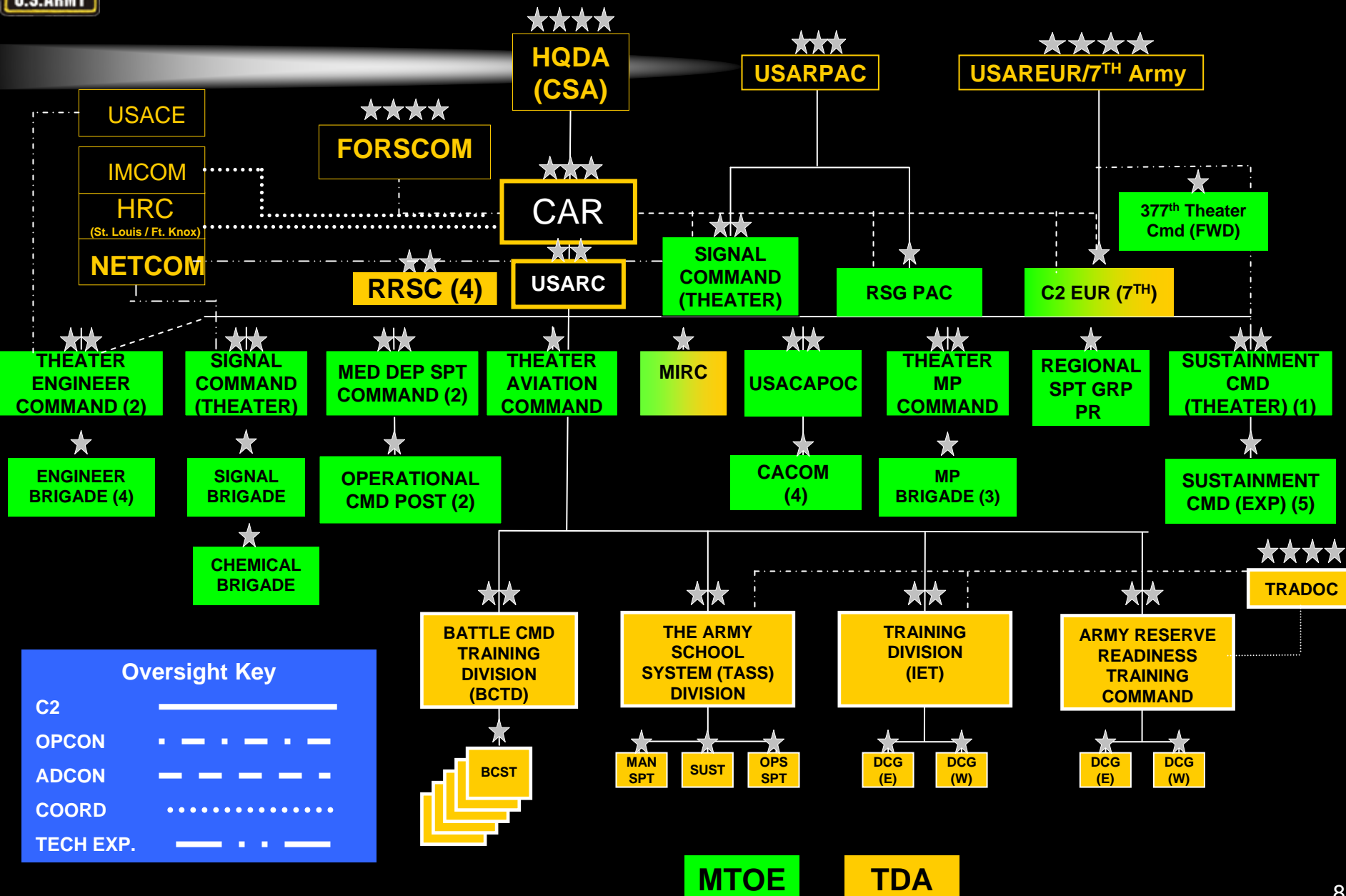


# Army Reserve in the Past





# Army Reserve Transformed



**Oversight Key**

- C2
- OPCON
- ADCON
- COORD
- TECH EXP.

**MTOE**      **TDA**



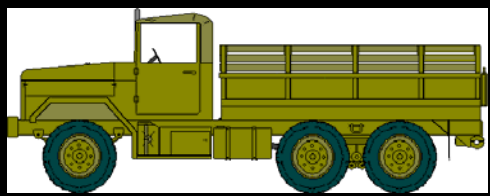


# *Army Reserve Equipping Sources*

- New procurement
- The redistribution or cascading of equipment from the Active Component
- Recapitalization and Overhaul of old (Legacy) equipment
- Congressional adds
- National Guard and Reserve Equipment Appropriation (NGREA)
- Supplemental

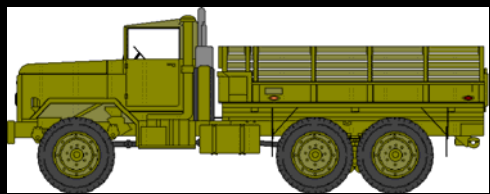


# Army Reserve Challenge: Age of Equipment



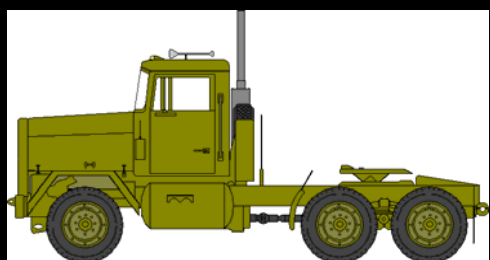
M35 Series 2.5-Ton Truck

Economical Usage Life: 20 years  
Average USAR Fleet Age: 35 years



M900 Series 5-Ton Truck

Economical Usage Life: 20 years  
Average USAR Fleet Age: 24 years



M915 Line-Haul Tractor

Economical Usage Life: 20 years  
Average USAR Fleet Age: 24 years



# *Army Reserve Challenge: Unfunded Modernization Requirements*

EQUIPMENT ITEM	ITEM COST	TOTAL COST
LIGHT MED TACTICAL VEHICLE (LMTV) 2.5-T TRUCK	\$176,428	\$425,367,908
MEDIUM TACTICAL VEHICLE (MTV) 5-TON TRUCK	\$183,333	\$761,381,949
TRUCK CARGO PLS 10X10 M1075	\$360,139	\$106,241,005
PLS TRAILERS	\$46,731	\$25,094,547
HIGH MOBILITY MULTI-PURPOSE WHEELED VEHICLE	\$61,665	\$303,700,125
HIGH MOBILITY MULTI-PURPOSE WHEELED VEHICLE (HMMWV) UP-ARMORED M1114	\$146,844	\$133,187,508
TRUCK TRACTOR LINE HAUL (M915A3)	\$162,968	\$70,728,112

**Total Unfunded Vehicle Requirements:  
\$1.826 Billion**



# *Army Reserve Solution: Force Protection to the Soldier*





# *Progress in Army Reserve Logistics*

- Implementing logistics program that directly supports the Army Force Generation (ARFORGEN) model.
- Reduced the backlog of equipment, redeployed from Iraq and Afghanistan, for inspection, repair, and/or overhaul from 14,000 to less than 1,500 items.
- Achieved a maintenance readiness level of 91 percent for reportable equipment on hand as fully mission-capable.
- Provided Rapid Fielding Initiative equipment to 62,000 Army Reserve Soldiers
- Integrated 7,014 pieces of equipment transferred from the Active Component to the Army Reserve.
- Inducted 5,337 major end items and 30,725 items for calibration into Depot maintenance.
- Identified \$742 million of Army Reserve stay-behind equipment retained in Iraq for replacement (such as HMMWVs, Trucks, Material Handling Equipment and communication equipment).
- Retired 6,800 M16A1 rifles from Army Reserve units in preparation for M16A2, M16A4, and M4 rifle replacement fielding.



# *Equipping an Operational Reserve*

- The modernization of light-medium trucks (75 percent are not Modular Force compatible or deployable and are not integral to training and operational efficiency).
- The modernization of medium line-haul tractors (50 percent do not support single-fleet policy and are not integral to training and operational efficiency).
- Modular Force equipment needed to support designated individual and collective training locations, including unit level collective training in a field environment.



# *Equipping an Operational Army Reserve*

- Sustainment Issues:
  - Fully fund FY2013 force structure, including replacement of battle and attritional losses due to Operation Iraqi Freedom/Operation Enduring Freedom and the increased training tempo.
  - Fully fund Army Reserve participation in the development and fielding of GCSS – A/T and SALE.
  - Assure depot maintenance funding at 90 percent or better.
  - Recapitalize tactical truck inventory.
  - Retain Army Reserve tactical maintenance contract labor to reduce mobilization and training equipment backlogs.



# *Army Reserve Solution: Equipment Shortfalls*

- Implementing Equipment Campaign Plan to work NGREA
- Cross-leveling massive quantities of equipment
- Continuing to execute \$92.0M for Depot Rebuild
- Implementing new Army Reserve Equipping Strategy
- Outsourcing Maintenance





# *The Centerpiece of the Army Reserve*



**The American Soldier!**



# *BACK-UP SLIDES*



# Army Reserve Challenge: Age of Equipment

## Average age of equipment exceeds Economical Usage Life

<b>CURRENT ON-HAND ITEM</b>	<b>*EUL</b>	<b>AVG AGE</b>	<b>MOD ITEM</b>	<b>STATUS</b>
2.5-Ton Truck (M35 Series)	20	35	LMTV	<b>RED</b>
5-Ton Truck (M900 Series)	20	24	MTV	<b>YELLOW</b>
HMMWV (All Models)	15	15	HMMWV	<b>YELLOW</b>
M915 Line Haul Tractor	20	24	M915A3	<b>YELLOW</b>
5 Ton & 20 Ton Dump Trucks	15/22	24	M917A1	<b>YELLOW</b>
M878 5-Ton Yard Tractor Truck	10	5	M878A2	<b>YELLOW</b>
M871 22.5-Ton Semi-Trailer	30	20	M871A3	<b>YELLOW</b>
50K Rough Terrain Cargo Handler	10	10	53K RTCH	<b>YELLOW</b>
10K Variable Reach Forklift	15	15	ATLAS	<b>YELLOW</b>

- **Yellow** = Fleet Average Age > than ½ EUL and < EUL
- **Orange** = Fleet Average exceeds EUL + 10 years
- **Red** = Fleet Average Age exceeds EUL + 10- 20yrs



# Army Reserve Challenge: Unfunded Modernization Requirements

EQUIPMENT ITEM	TOTAL REQ	ON HAND	ALL SOURCES	SHORT	ITEM COST	TOTAL Short COST FY2006
LIGHT MEDIUM TACTICAL VEHICLE (LMTV) 2.5-TON TRUCK	3665	1254	3104	-2411	\$176,428	\$425,367,908
MEDIUM TACTICAL VEHICLE (MTV) 5-TON TRUCK	4527	374	4527	-4153	\$183,333	\$761,381,949
TRUCK CARGO PLS 10X10 M1075	922	627	627	-295	\$360,139	\$106,241,005
PLS TRAILERS	1232	695	695	-537	\$46,731	\$25,097,547
HIGH MOBILITY MULTI-PURPOSE WHEELED VEHICLE (HMMWV)	17,145	12,220	13,095	-4925	\$61,665	\$303,700,125
HIGH MOBILITY MULTI-PURPOSE WHEELED VEHICLE (HMMWV) UP- ARMORED M1114	914	7	7	907	\$146,844	\$133,187,508
TRUCK TRACTOR LINE HAUL (M915A3)	2247	1813	1813	-434	\$162,968	\$70,728,112

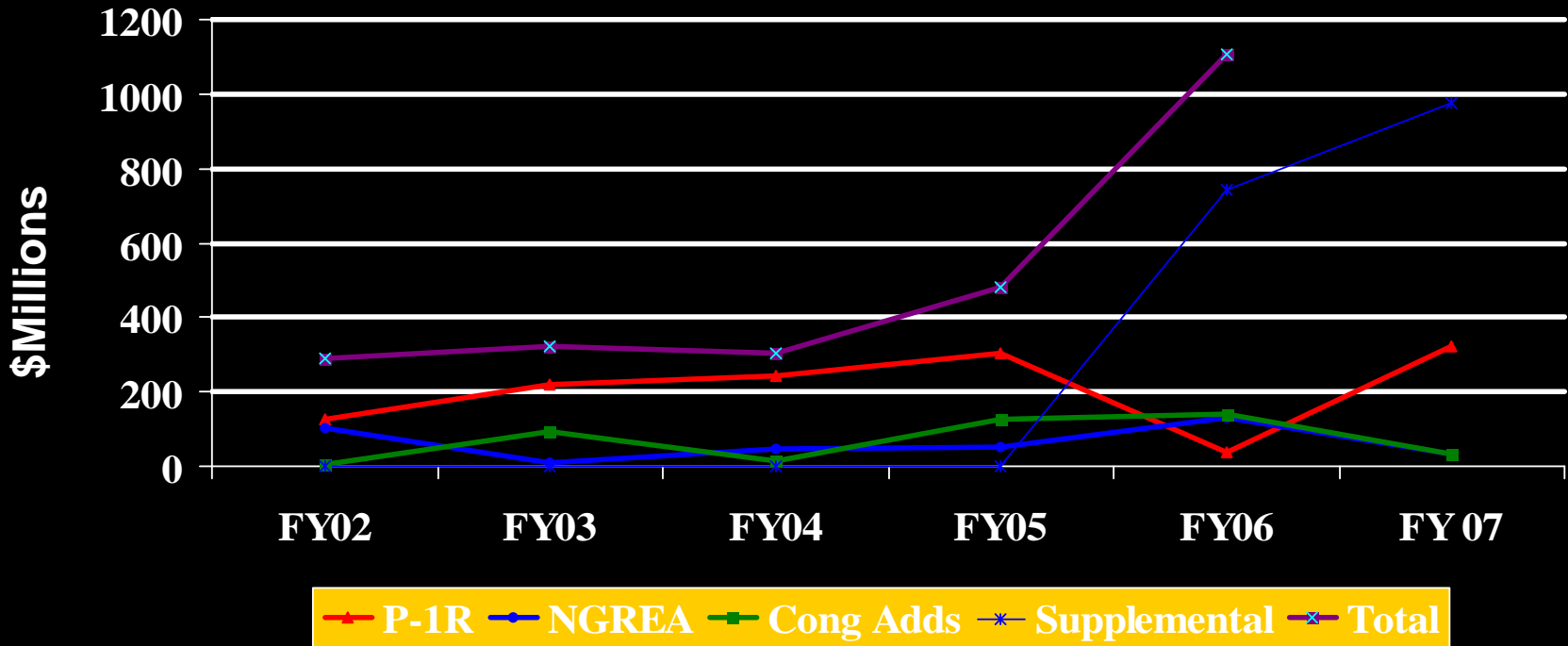
\*ALL SOURCES = P1-R, NGRE, CONG ADDS



# Modernization Challenges

Army Reserve  
requires \$1.6B/yr  
over the POM

## ARMY RESERVE PROCUREMENT





# *Current Equipment Status*

Assessment based on service life, usage, and EOH as of 31 Dec 06.

- Light Truck Fleet **RED**
- Light/Medium Truck Fleet **RED**
- Medium Truck Fleet **RED**
- Heavy Truck Fleet **AMBER**
- MHE **RED**



# *Equipment Analysis*

- Current reconstitution efforts are directed to the following levels:
  - Organizational, DS and GS maintenance personnel perform joint Technical Inspections
  - Equipment is repaired at DS/GS levels to Fully Mission Capable and Safety Items
  - Organizational maintenance completes repairs to -10/-20 standard
  - Only those items recognized as unserviceable through the TI
  - The frame of vehicles are only inspected visually.
- The result is that our equipment will have **unidentified frame and systems fatigue** and will suffer “delayed desert damage” from foreign substances left in assemblies and components not disassembled for inspection or repair.
- We can expect to see **severe or even catastrophic maintenance failure** of our redeployed equipment. This will occur even in CONUS at peacetime OPTEMPO, beginning no later than FY 2008. Sustainment costs for this equipment will rapidly exceed funding.



# *Future Analysis*

- There are three means by which to correct this problem:
  - Depot maintenance conducted as soon as possible after arrival in CONUS.
  - Recapitalization of the equipment as soon as possible after redeployment.
  - Procurement of replacement equipment between FY 06-11.
  
- **The solutions, however, are not funded.**
  - Depot maintenance faces an \$372.2M shortfall from validated requirement to funded levels over FY08-13 POM years.
  - Recapitalization currently only addresses 3200 M998 HMMWVs, 162 PLS trucks and 66 HETs. This only 33% of our projected numbers for M998A0/1 HMMWVs and 14% of HETs on-hand in FY 2011.
  - Procurement planned previous to OIF was based on known shortages.
  - Shortages must be reduced and equipment, which is non-deployable or is barely compatible, replaced, to achieve the Modular, “Plug and Play” Army envisioned by the CSA.
  - Immediate funding of \$1.6B to meet Modularity through ARFORGEN is required, with \$300M a year over the POM to sustain the momentum and maintain the force.





# Summary

- Lack of adequate funding stream to purchase or upgrade TWV fleet
- Reduced or decremented system quantities and delayed fieldings impacts the ability to meet Transformation goals
- Aging equipment is expensive and labor-intensive to maintain and sustainment funding must be increased
- Substitute or in-lieu-of items perpetuate incompatibility and interoperability issues. These incompatibility issues create impediments to supporting the digitized force and OIF requirements
- Limited benefit from Army Recap program for the Army Reserve

## BOTTOM LINE:

- Shortage of new equipment procurement (P-1R) makes funding provided through NGREA, Congressional Add and support of Depot Maintenance Programs vital to the readiness of the Army Reserve TWV fleet



# Equipment Assessment

- Light Truck Fleet **RED**
  - 17,145 REQ, 12,220 O/H, 29% Short
  - 1,452 identified as AOA = SBE CAT 5
  - Shortage includes 907 M1114 UAH
  - 73% of M998 fleet early production A0
  - Deployed 71% of fleet to OIF1, 2 & 3
  - 875 CUCV O/H ILO in TDA
  - 3,905 M998A0 to M1097A0 RECAP funded for FY06-11



# *Equipment Assessment*

- Light/Medium Truck Fleet **RED**
  - 3,665 REQ, 3,104 O/H, 15% Short
  - 1,254 LMTV REQ, SUB by 1,850 M35 series trucks
  - 443 LMTV Planned Procurement
  - Current procurement leaves over 1,000 M35 trucks O/H in FY 2011



# *Equipment Assessment*

- Medium Truck Fleet **AMBER**
  - 4,527 5 Ton Tactical Truck REQ, 4,527 O/H, 0% Short
  - 374 MTV, Subs 4,119 M900 series, 34 M800 series
  - Majority of tractors still require ABS MWO
  - Limited numbers of MTVs being released for deploying units
  - 286 MTV Planned Procurement



# *Equipment Assessment*

- Medium Truck Fleet ( M915 Series) **AMBER**
  - 2,247 5 Ton Line Haul Tractor REQ, 1,813 O/H, 19% Short
  - 468 A0 and 631 M915A1 O/H
  - 181 A0 being converted to M915A4, 293 programmed



# *Equipment Assessment*

- Medium Truck Fleet **RED**
  - 922 PLS Truck REQ, 627 O/H, 22% Short
  - 1,22 PLS trailers REQ, 695 O/H, 54% Short
  - 292 identified as AOA = SBE CAT 5
  - 76 PLS Planned Procurement
  - 667 HEMTT REQ, 635 O/H, 5% Short



# *Equipment Assessment*

- Medium Truck Fleet **RED**
  - 601 M870 trailers REQ, 515 O/H, 14% Short
  - 723 M871 trailers REQ, 1,130 O/H, 0% Short
  - 1,140 M872 trailers REQ, 1,849 O/H, 0% Short
  - 1,260 M967 tankers REQ, 1,069 O/H, 15% Short
  - 377 M969 tankers REQ, 468 O/H, 0% Short
  - 480 7.5K tankers REQ, 275 O/H, 43% Short



# *Equipment Assessment*

- Heavy Truck Fleet **AMBER**
  - 343 HET tractors REQ, 338 O/H, 7% Short
  - 343 HET trailers REQ, 336 O/H, 2% Short
  - 743 M916 tractors REQ, 625 O/H, 16% Short
  - 49 M920 tractors REQ, 61 O/H, 0% Short





# *Equipment Assessment*

- Materiel Handling Equipment **RED**
  - 566 4K RTFL REQ, 479 O/H, 15% Short
  - 235 6K RTFL REQ, 223 O/H, 5% Short
  - 810 ATLAS & 10K RTFL REQ, 483 ATLAS & 307 10K O/H, 2% Short
  - 222 53K & 50K RTCH REQ, 87 53K & 69 50K RTCH O/H, 30% Short



# *Depot Maintenance Program (FY06)*

- FY2006 Execution: \$92.062M
  - 180 M931/2 tractors
  - 117 M105 trailers
  - 45 M101 trailers
  - 14 10K RTFL
  - 35 4K RTFL
  - 25 HEMTT
  - 153 HMMWV
  - 146 M923/25 trucks
  - 41 5000K M967 tankers
  - 40 5000K M969 tankers
  - 40 M870 semi-trailers
  - 60 M872 semi-trailers
  - 140 M871 semi-trailers
  - 2300 NVG



# **DEPOT MAINTENANCE CONTRACTOR SUPPORT**

**FY 06**

- **LEAR SIGLER** **\$12.2M**
  - Trailers, HMMWV, Bridge Boats
- **VSE Corp** **\$15.0M**
  - Trailers, Fuel/Water Pumps, Decons
- **HoneyWell** **\$ 1.5M**
  - 5 Ton Trucks
- **Detyens Shipyards** **\$ 1.8M**
  - Watercraft LCU 2000
- **Metal Trades** **\$ 1.7M**
  - Watercraft LCU 2000
- **Marine Industries NW** **\$ 2.1M**
  - Watercraft LCU 2000