



# ***CB Defense Physical Science & Technology Division Modeling & Simulation / Battlespace***

**Mr. Chuck Fromer  
Joint Science and Technology Office for  
Chemical and Biological Defense (JSTO-CBD)**

**October 25, 2005**



*Making the World Safer*



# ***Modeling & Simulation / Battlespace Outline***

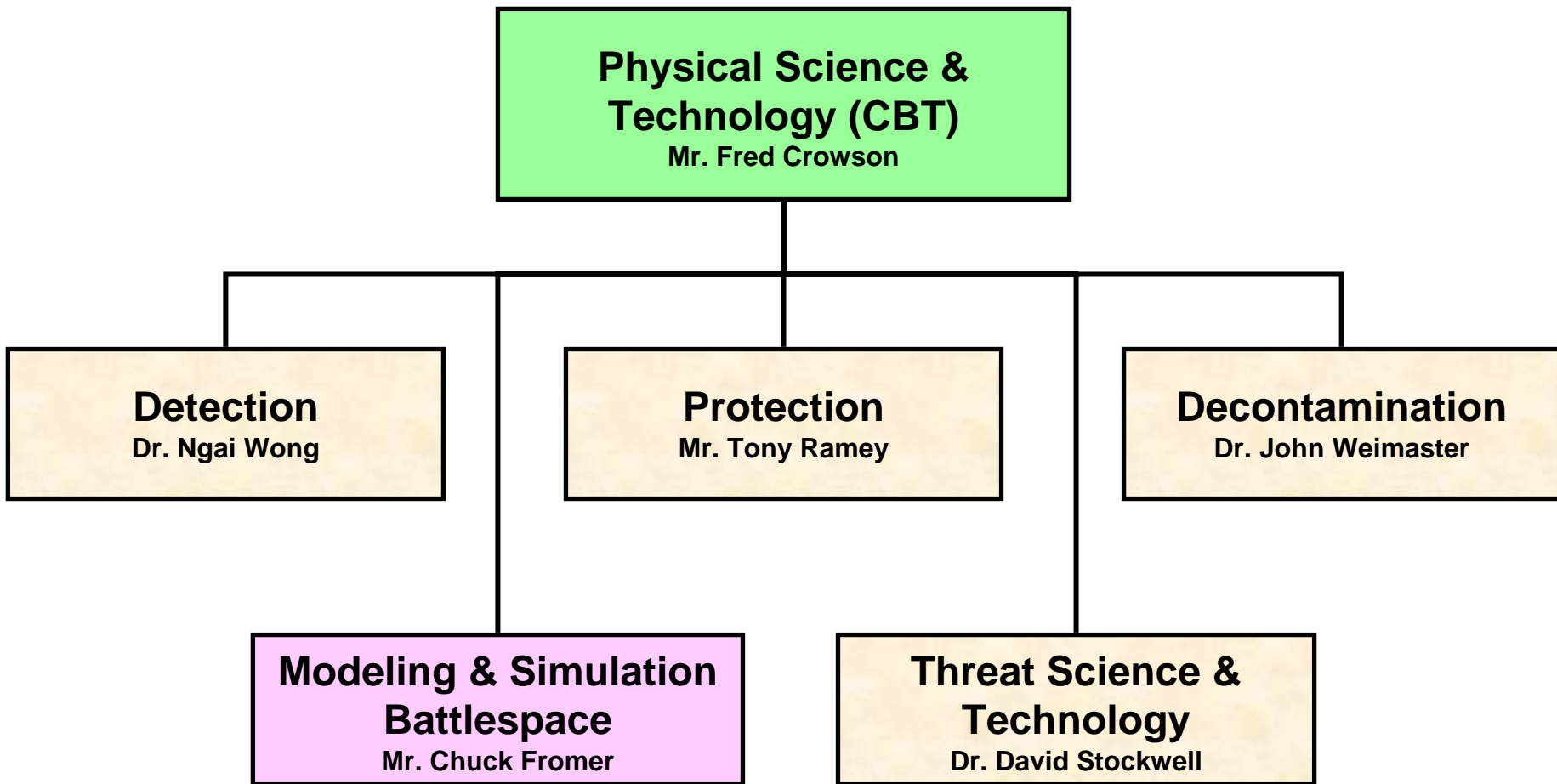


- **2005 Taxonomy**
- **2006 Taxonomy**
- **S&T Program Methodology**
- **Changes for 2006**
- **Technology Transition Agreements (TTA) Focus**
- **Technology Push Initiatives**
- **The Team**



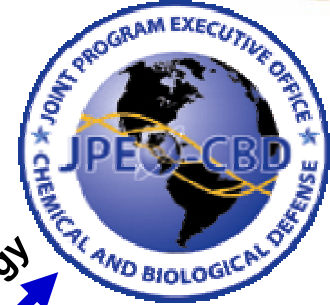


# Modeling & Simulation / Battlespace Physical Science & Technology (CBT) Structure





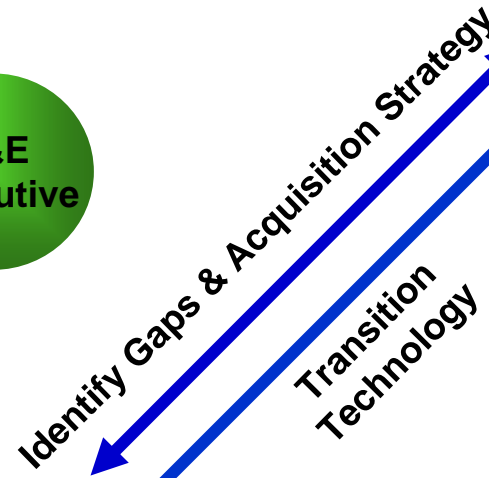
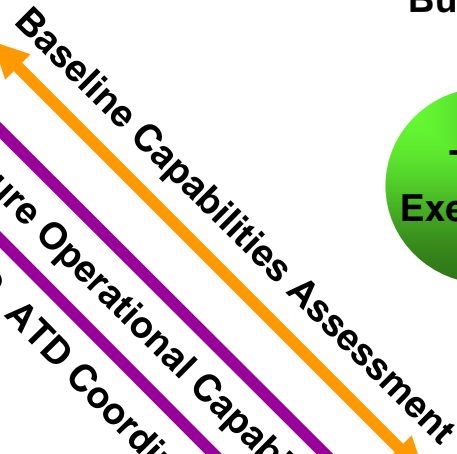
# Modeling & Simulation / Battlespace Joint Structure



Capabilities Documents



Build POM



Input for  
Priorities

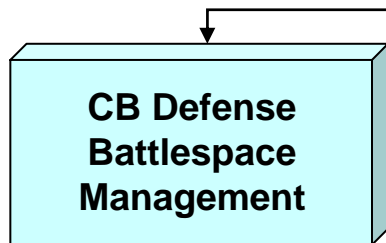
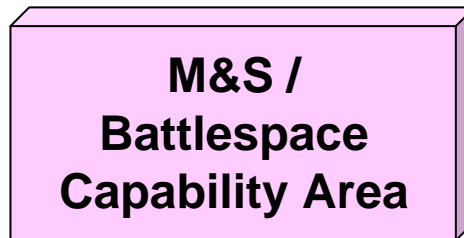
Services

Combatant  
Commanders

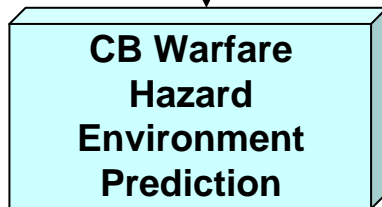




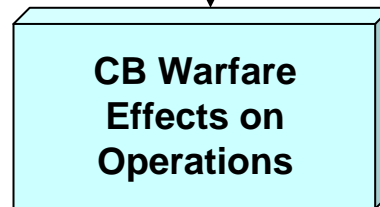
# Modeling & Simulation / Battlespace 2005 Taxonomy



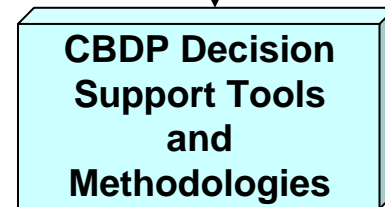
- Integration of relevant data with C4ISR systems
- Automated decision aids
- Sensor data integration



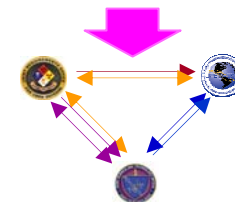
- Advanced transport & dispersion
- High altitude dispersion
- Coastal & littoral
- Urban dispersion



- Fixed facility
- Mobile forces
- Theater conflict simulation
- Vulnerability analysis

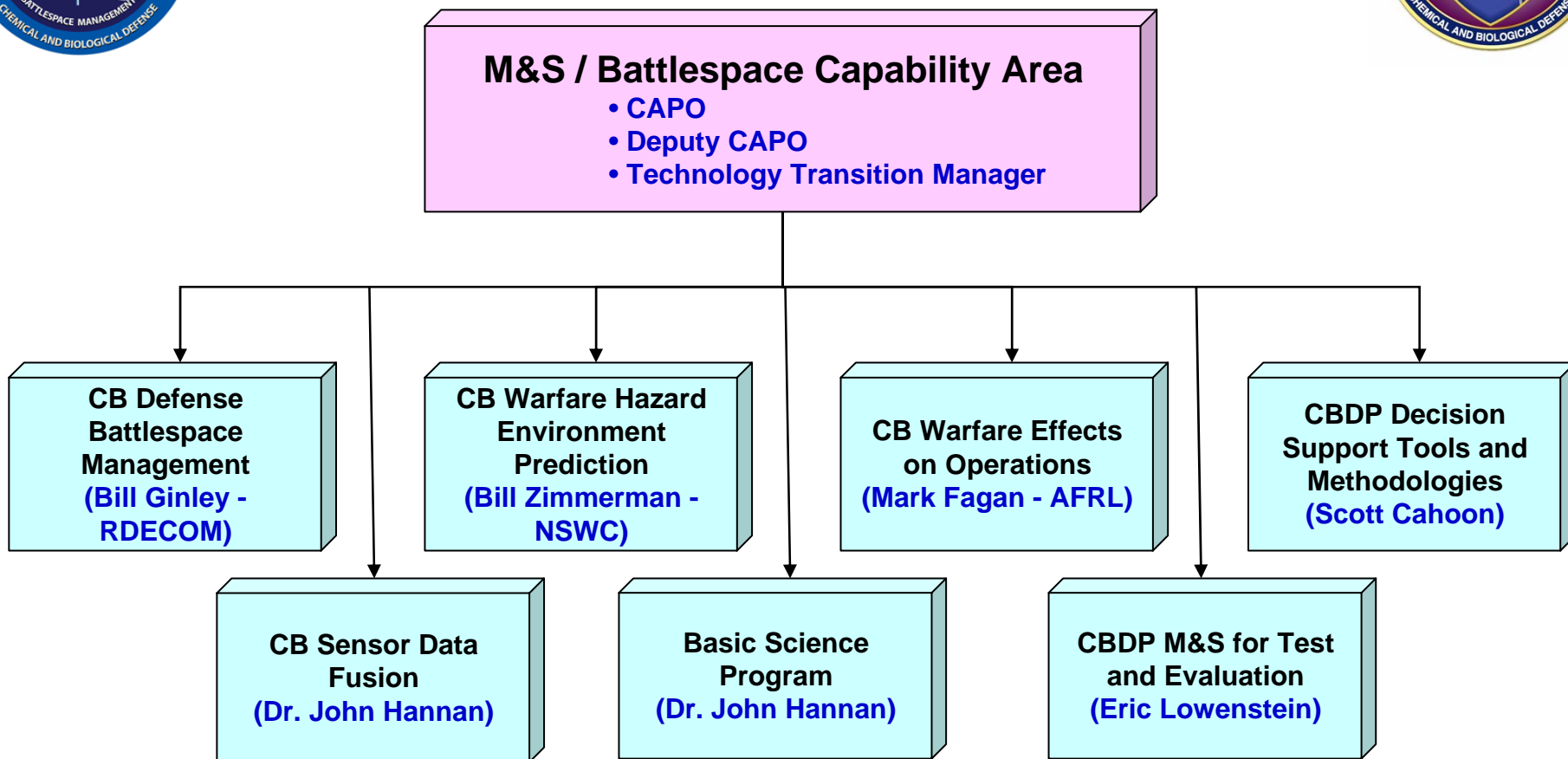


- Research, development and acquisition applications
- Program decision support
- Virtual prototypes



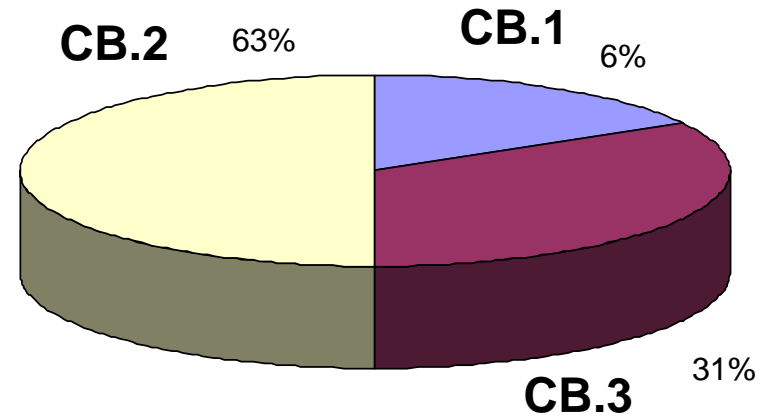
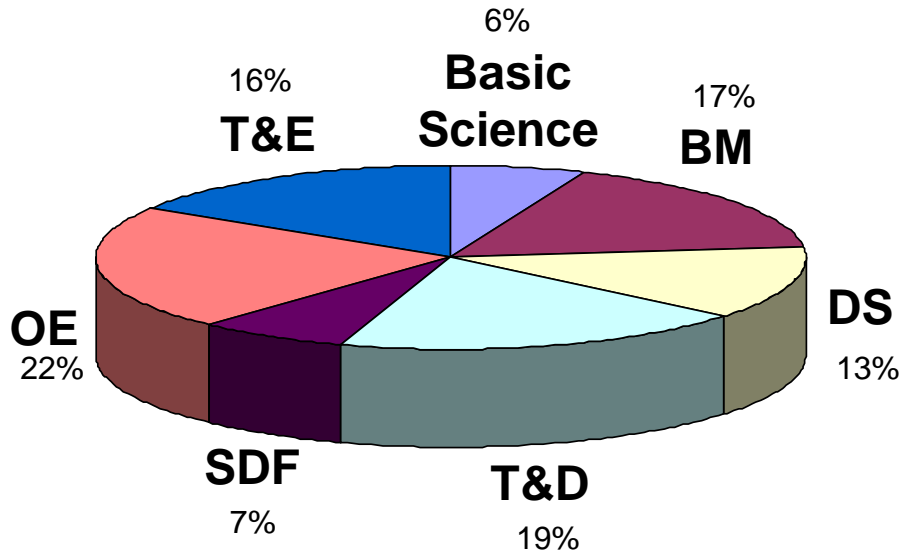


# Modeling & Simulation / Battlespace 2006 Taxonomy





# Modeling & Simulation / Battlespace FY06 New Start Funding Summary



*Funding By Thrust Area*

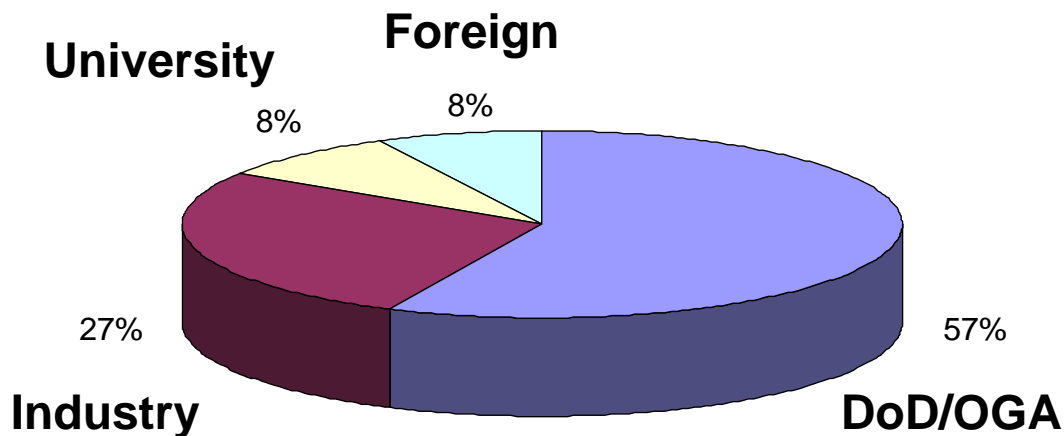
*Funding Line Break-out*



Making the World Safer



# Modeling & Simulation / Battlespace FY06 Funding Summary



## *Funding By Performer*



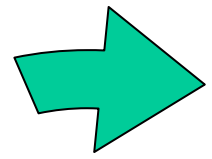




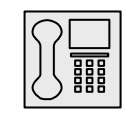
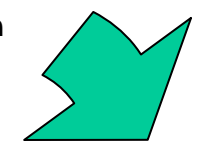
# S&T Program Methodology



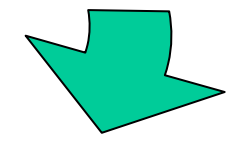
Data Call to  
S&T  
Performers



Phase I  
Submission



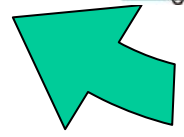
Phase I  
Selection



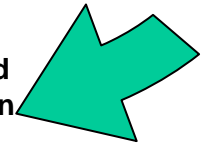
Phase II Call



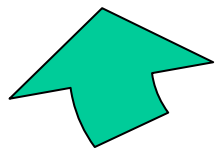
Phase II  
Selection



Phase II and  
Continuation  
Review



Execution



Technology  
Transition





# *Changes for 2006*

- **Basic Research Program**
  - Four 6.1 projects slated for start – previous year saw zero.
- **T&E Modeling and Simulation**
  - Overarching models for support T&E
- **DTRA Reorganization and BRAC**
  - Programs people from DTRA come to JSTO
- **Bio-Medical Initiative**
- **More Staff**



*Making the World Safer*



# ***Modeling & Simulation / Battlespace Focus on Technology Transition Agreements (TTAs)***

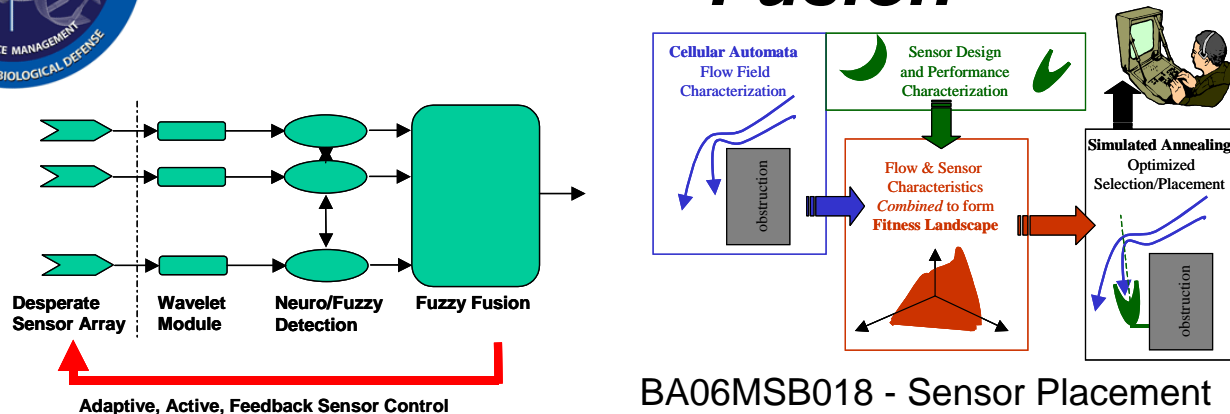


- TTAIS001: Modeling Capability for STAFFS (addendum to existing STAFFS TTA)**
- TTAIS002: CB Simulation Suite Maturation/Transition**
- TTAIS003: CB Sensor Siting Around Building Complexes**
- TTAIS004: Improvements in CBR Operational Effects Modeling Tools and Methods**
- TTAIS005: Improving RUSTIC for Coastal Ocean and Rolling Terrain**
- TTAIS006: Model of Chemical IED Effects on Mobile Forces**
- TTAIS007: Capability for Satisfying Data Requirements of CBRN Tools**
- TTAIS008: Sensor Alert Verification for Incident Operational Response**
- TTAIS009: Common CBRN Software Services**
- TTAIS010: Next Generation CB Battle Management**
- TTAIS011: Measurement of Coastal and Littoral Toxic Material Tracer Dispersion**
- TTAIS012: Methodology Development for Improving CBRN Situational Awareness**
- TTAIS013: Environmental Fate of Agents Chemical**
- TTAIS014: Hazard Prediction with Nowcasting**
- TTAIS015: Release and Atmospheric Dispersion of Liquid Agents**
- TTAIS016: Shared Common Operating Picture for Homeland Security and Homeland Defense**
- TTAIS017: JCID Compliant Thin Server for Sensors**
- TTAIS018: InterLAN Socket Connection Manager (ILSCM)**
- TTAIS019: CB Source Determination**
- TTAIS020: Next Generation Model of CB Effects on Military Operations**
- TTAIS021: CB System Military Worth Assessment Toolkit**
- TTAIS022: JCID on a Chip**

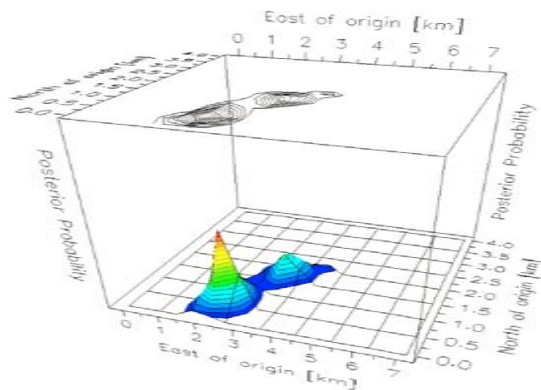




# Technology Push: Sensor Data Fusion

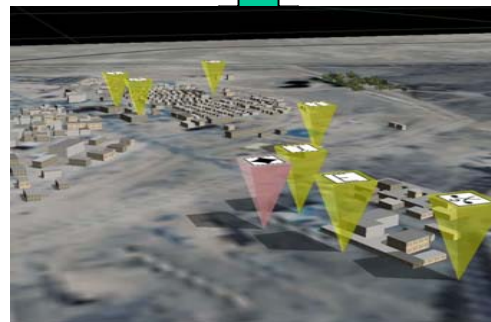


BA04MSB007 - Sensor Network Methodologies



BA05MSB002 - CB Source Determination

BA06MSB018 - Sensor Placement Software Suite



BA05MSB009 - CB Weapon Environment Prediction: Fusion of Sensor and Model Data

Joint Warning and Reporting Network (JWARN);  
Joint Effects Model (JEM);  
Joint Operational Effects Federation (JOEF)

**Fuse sensor arrays with hazard prediction models to optimize sensor placement, reject false alarms, estimate agent sources and achieve advance warning**

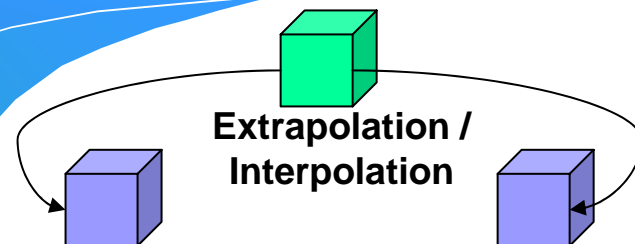
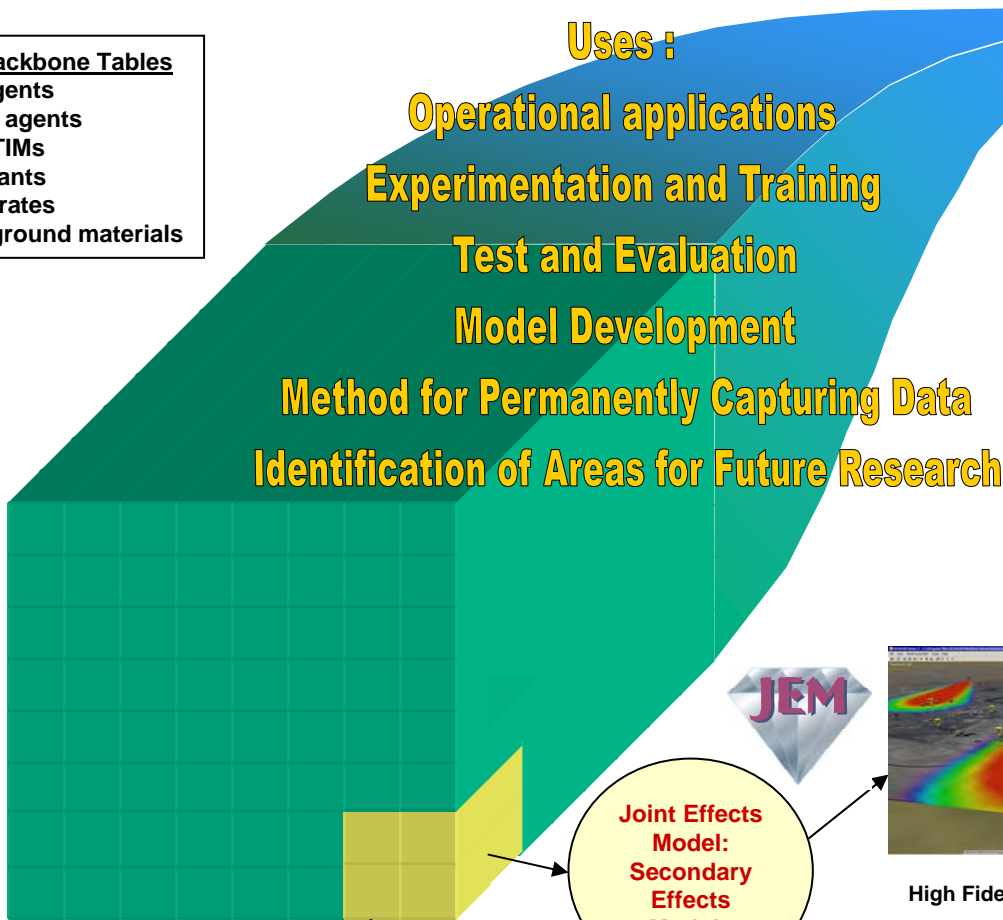




# Technology Push: CB Validated Interactive Science & Technology Data Backbone

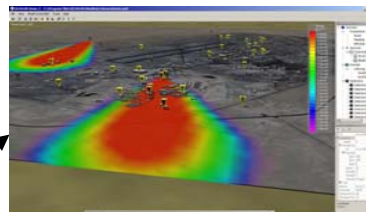
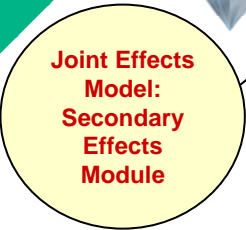


- Data Backbone Tables**
- Bio agents
  - Chem agents
  - TICs/TIMs
  - Simulants
  - Substrates
  - Background materials



- Candidate Data Fields/Attributes**
- Genomics
  - Proteomics
  - Persistence
  - Exposure risks
  - Signatures
  - Environmental variables
  - Dose rate
  - Vapor pressure
  - Spectral signature
  - Real data vs. Extrapolated/Interpolated

Agent Fate Data Example



High Fidelity Model Development



Enhanced Decision Making





***Questions?***



*Making the World Safer*